



beCAD INVENTOR 2024

INSTALLATION GUIDE



beCAD Inventor 2024 plugin

IMPORTANT!

This only works on INVENTOR **2024**



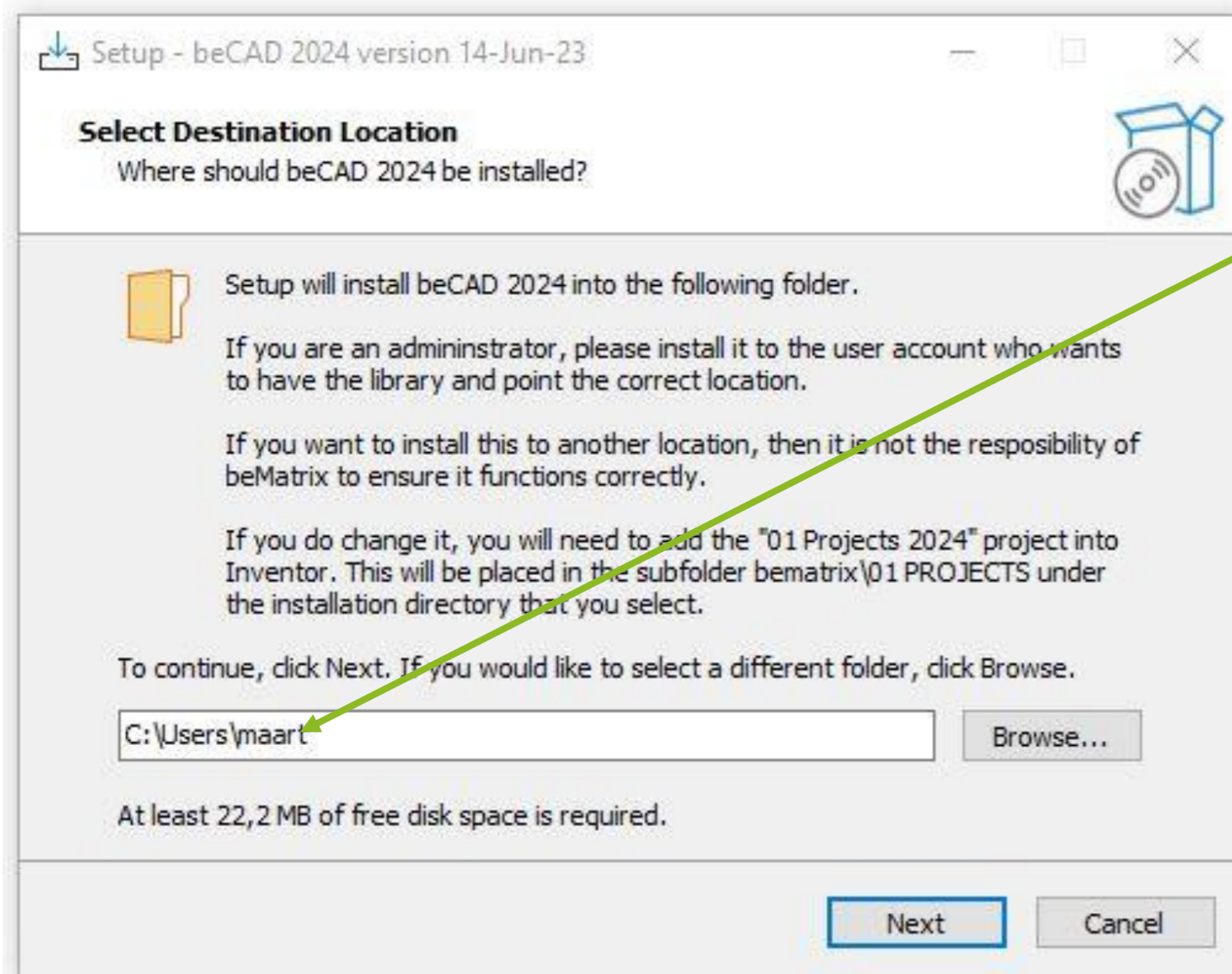
AUTODESK
Inventor Professional
2024

- If you had 2022 – please uninstall the bematrix plugin.
- Then install inventor 2024
- Open Inventor a first time and press “**ALT+ F11**”
- Follow the steps to install **VBA** plugin

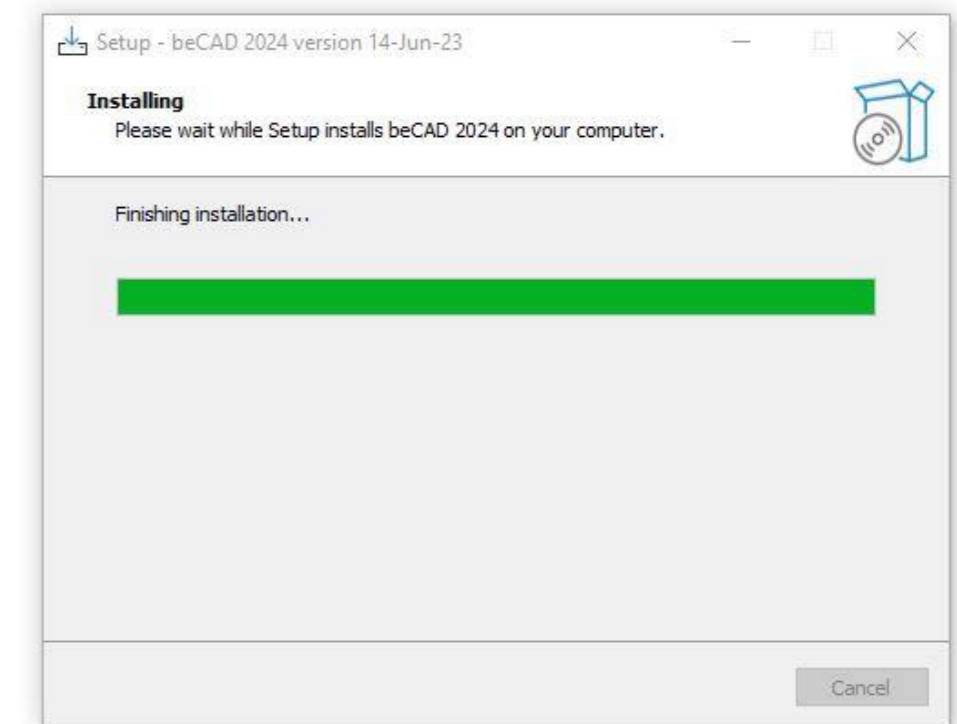
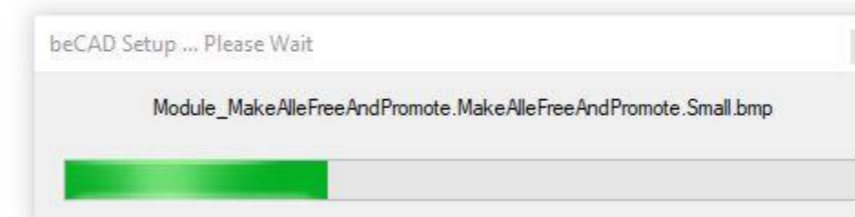


Installation

- Execute the file that you have received by mail.



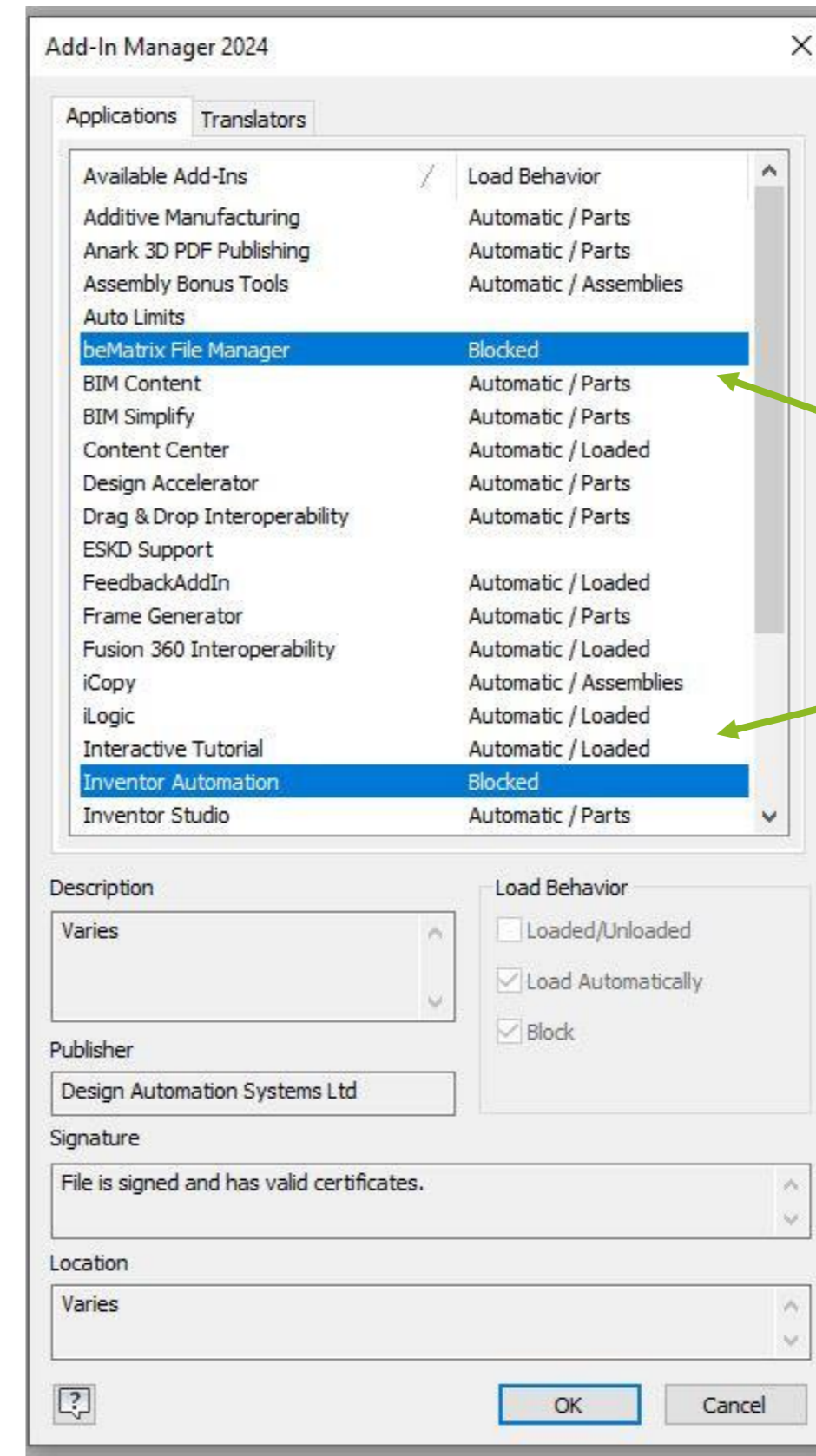
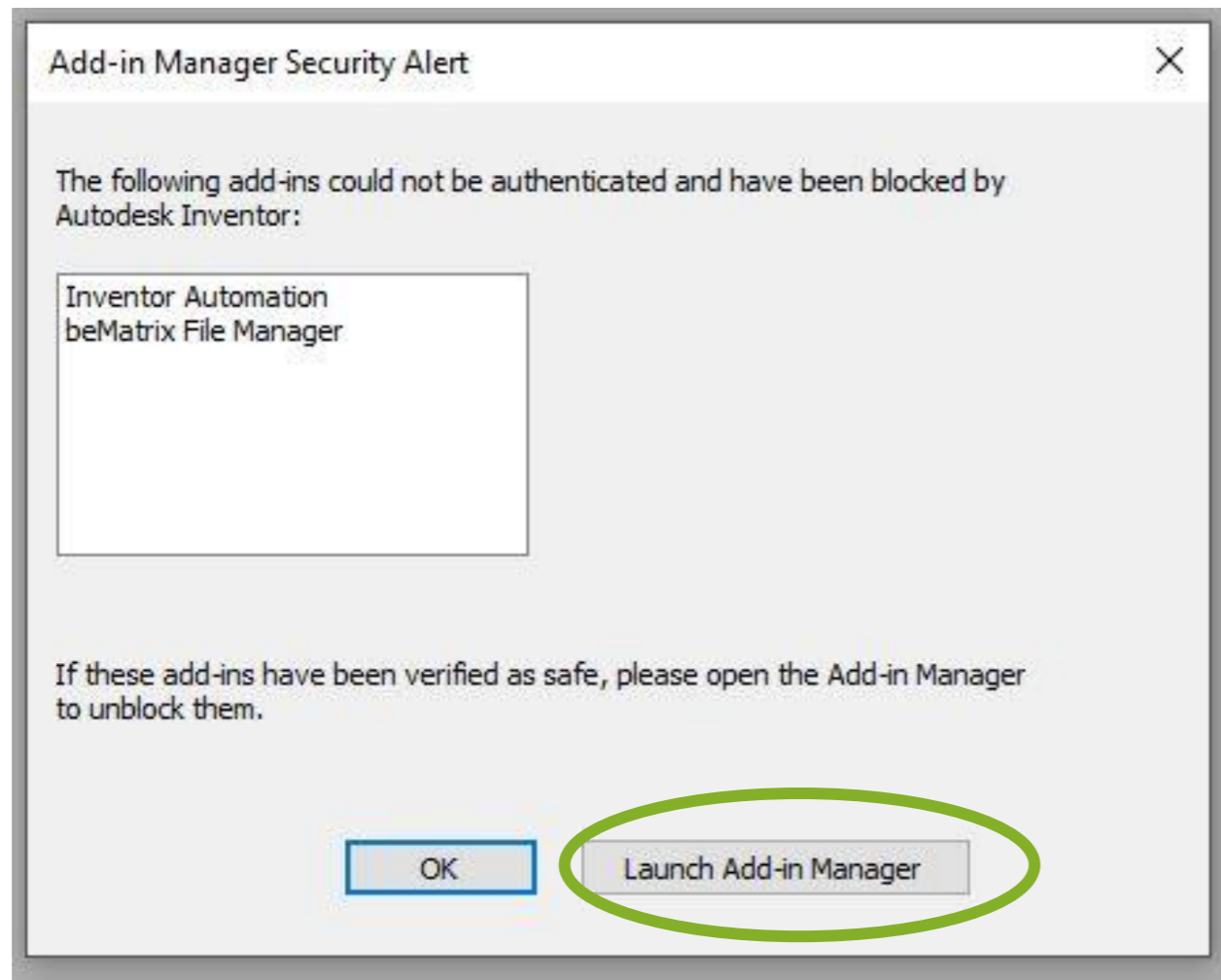
When you are an administrator, please select the user account where beCAD needs to be installed. It could be that you need to delete 2 dots.



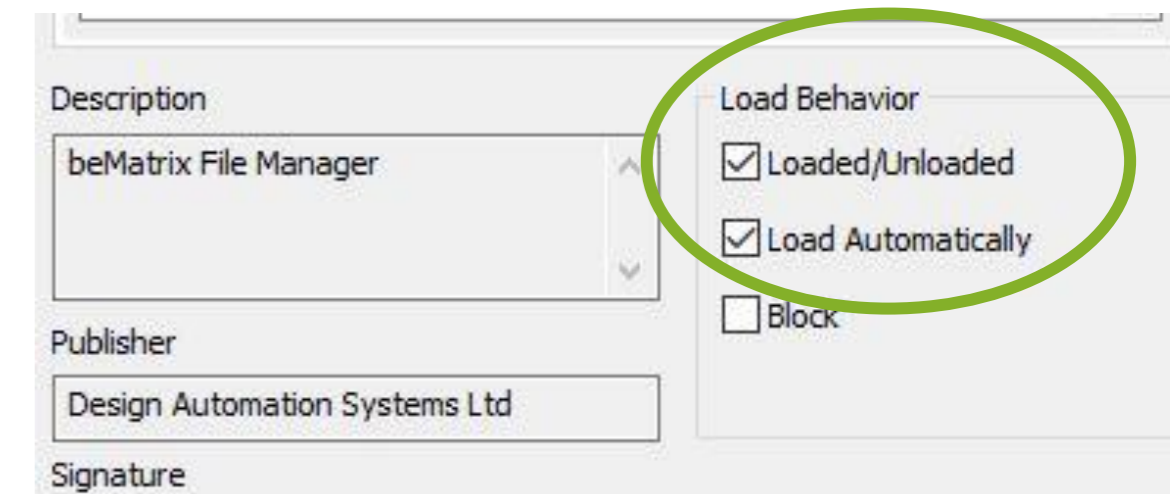


Add ins

- If you start Inventor, you should receive a pop-up.
- Launch the ADD-in manager and unblock the 2 applications.
- If you don't see the pop-up, go to the TAB Tools/Add-ins



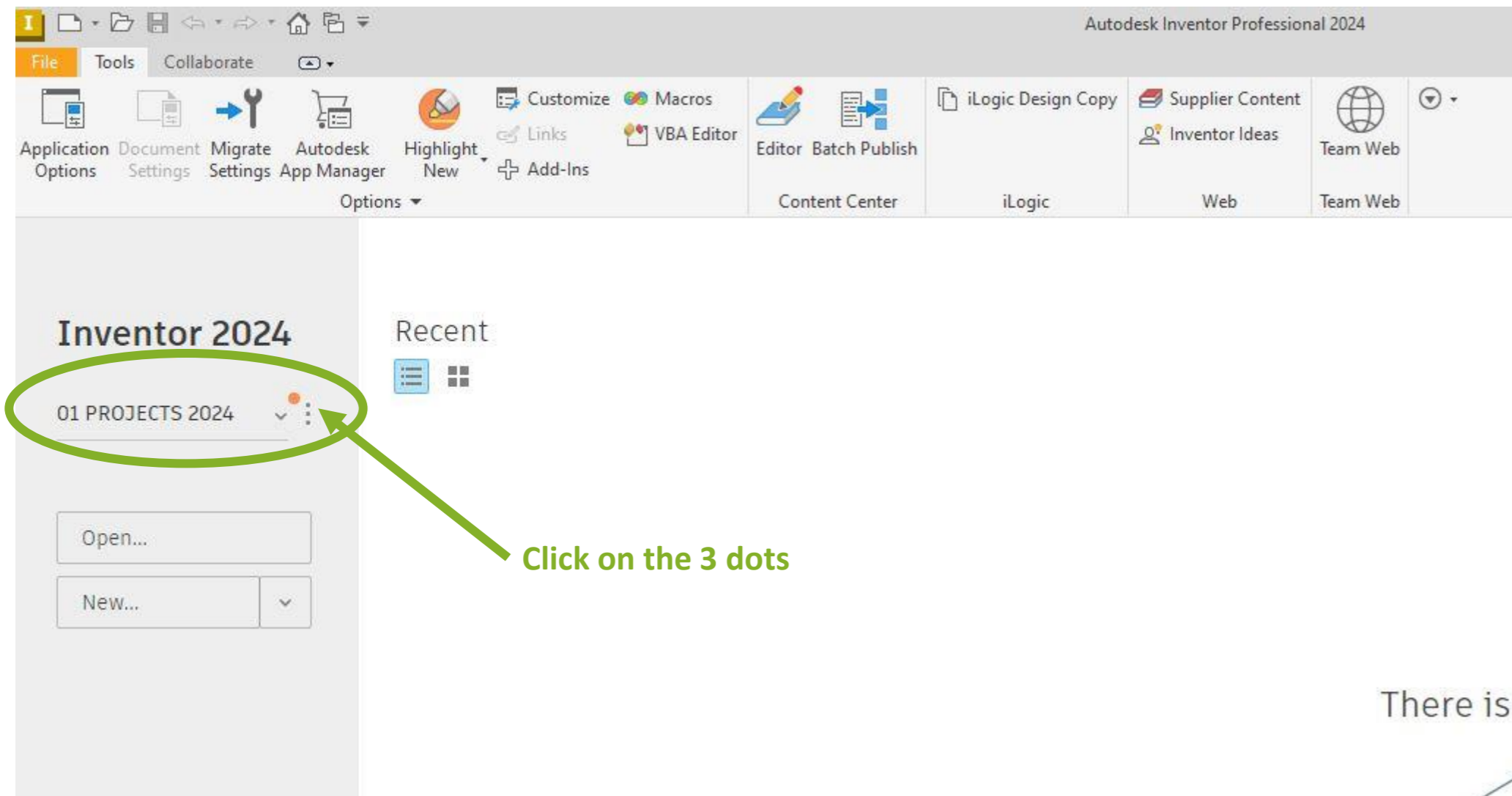
UNBLOCK these 2



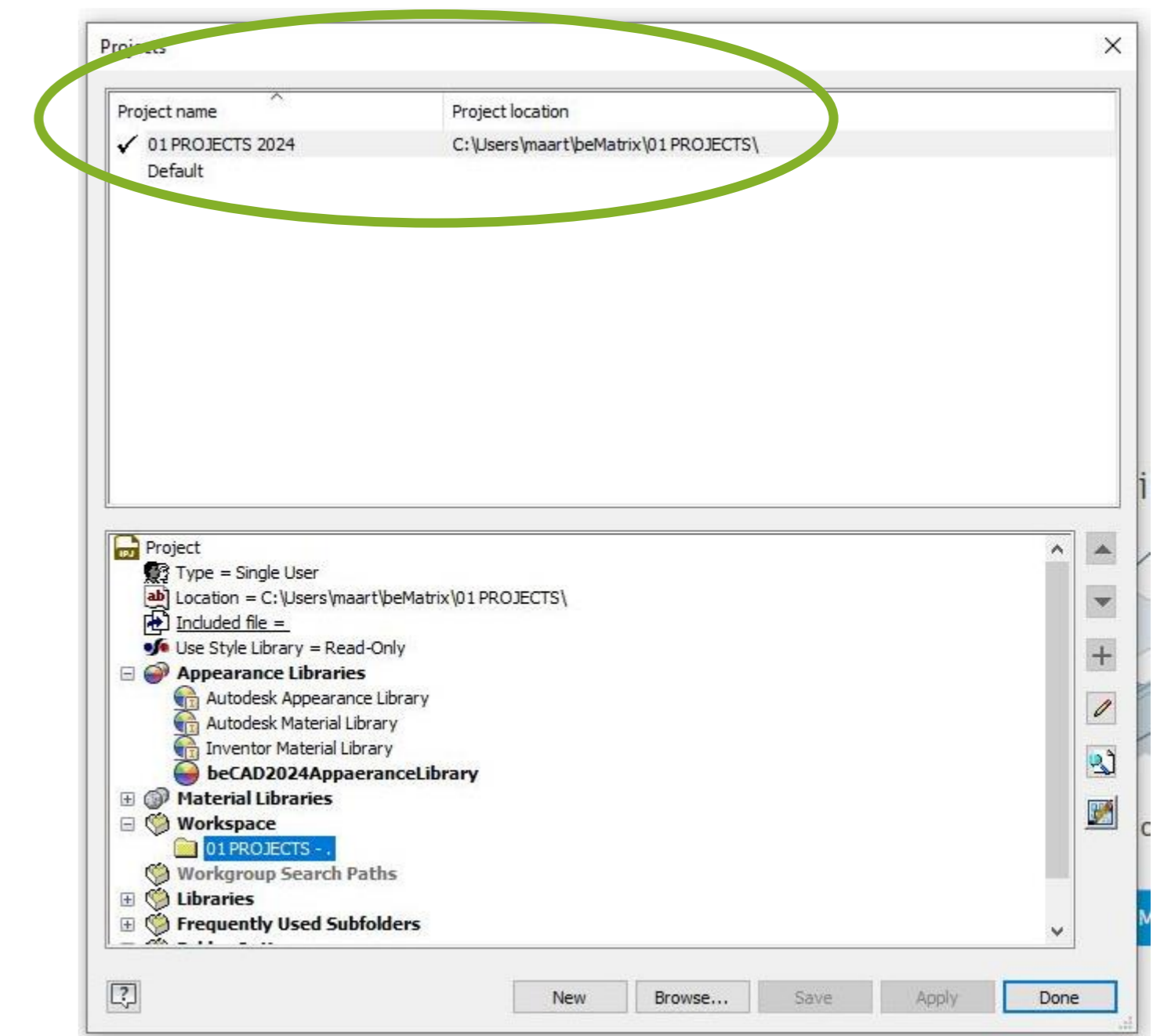


Projects

- Check if you have now the “01 PROJECTS 2024”



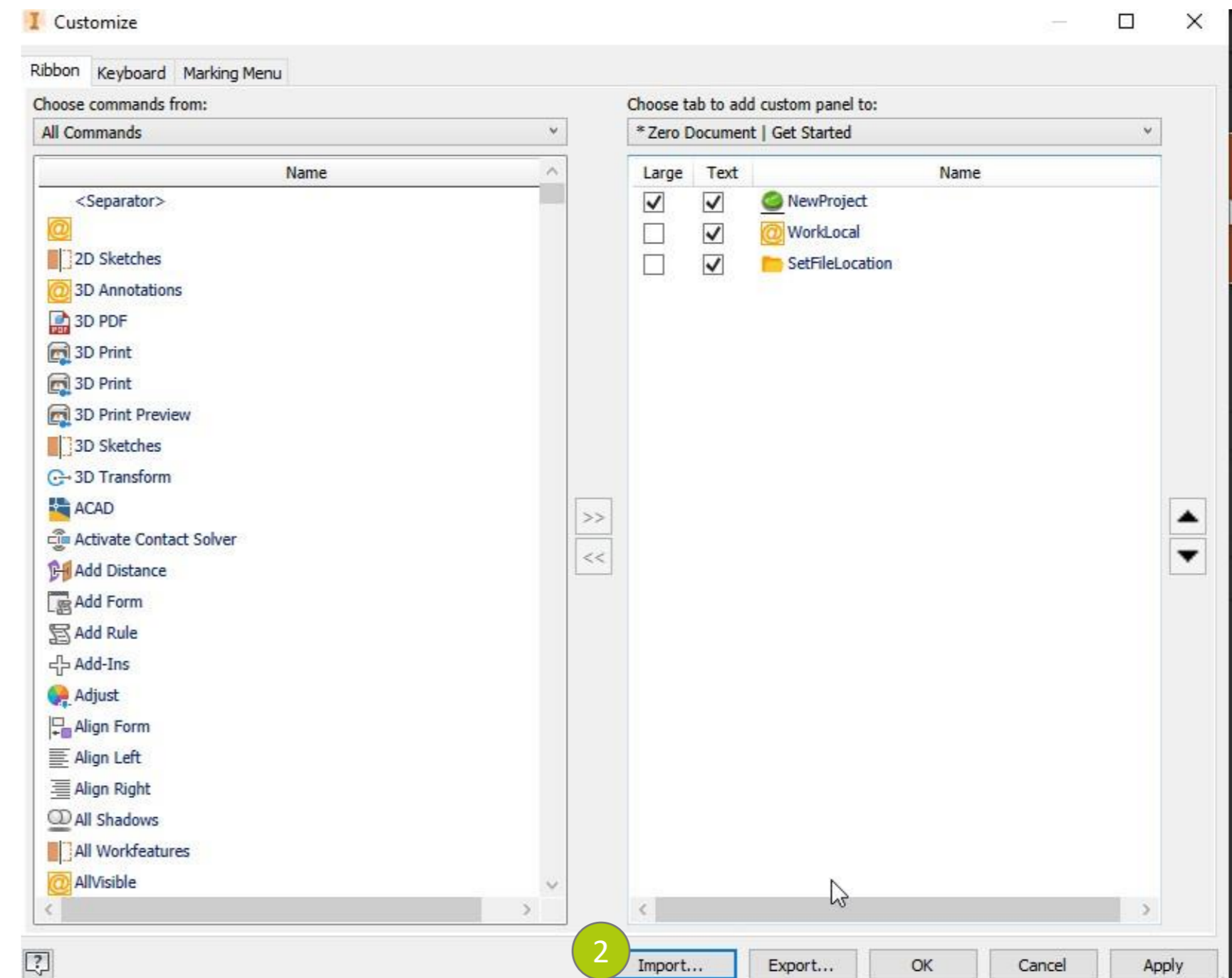
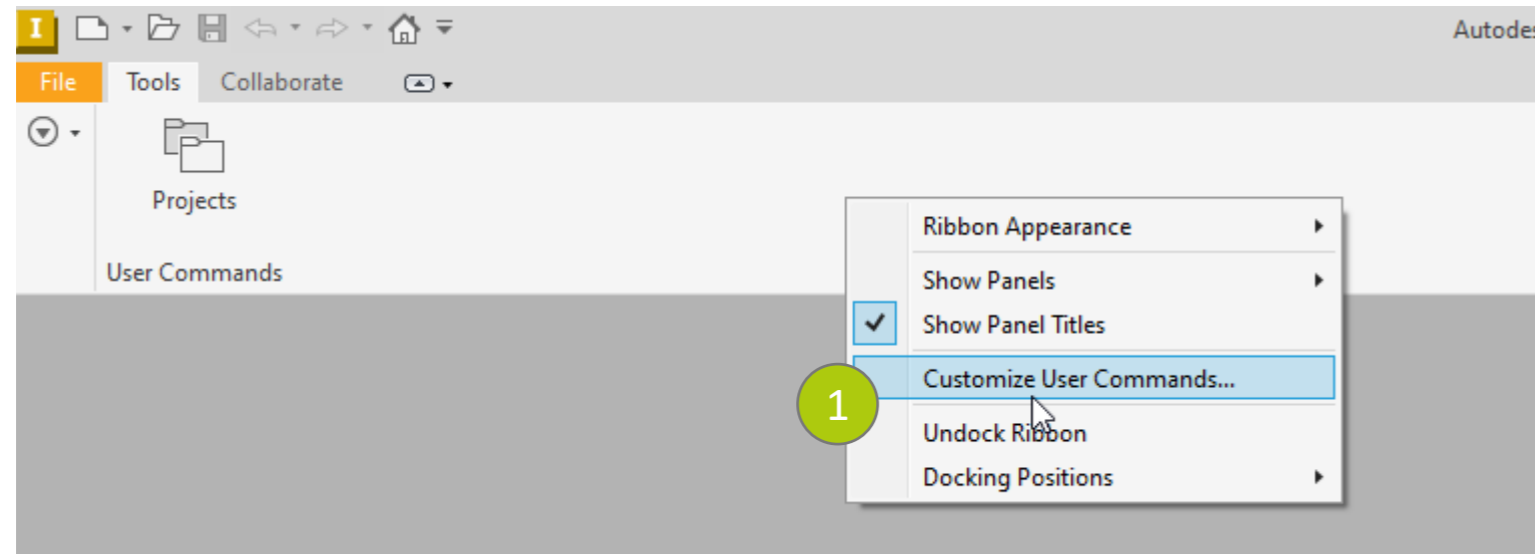
There is r





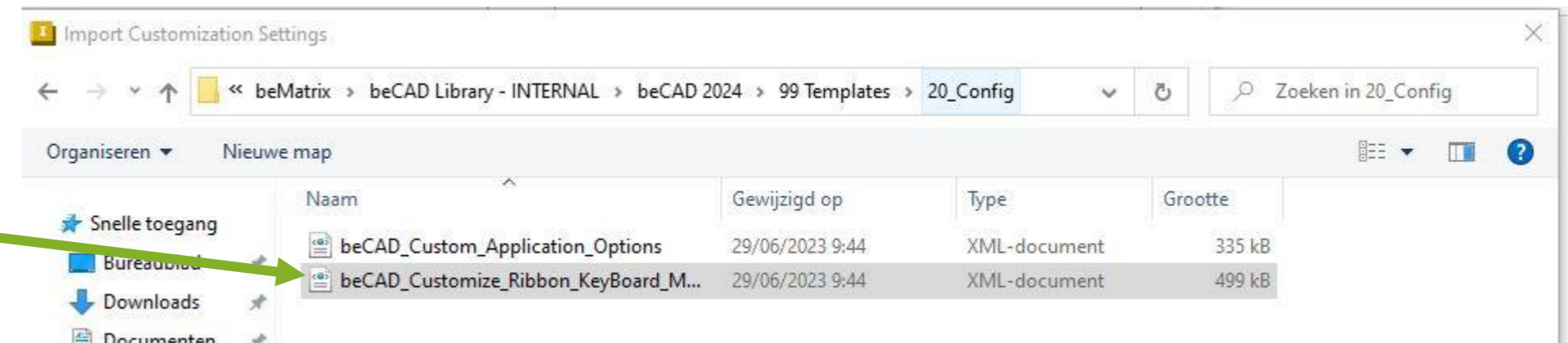
Customize

1. Right mouse click in the ribbon and (1) **Customize user commands:**



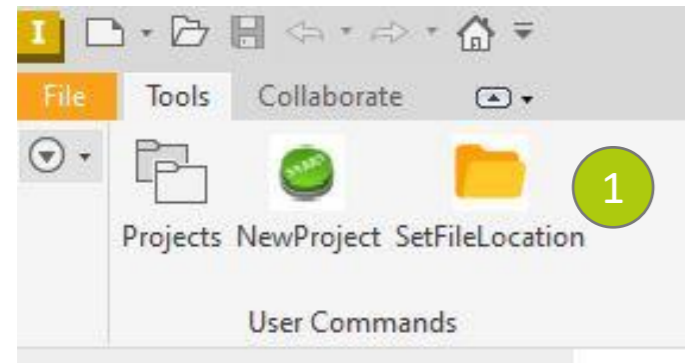
2. **Import the file (2)**

- Go TO *C:\Users\xxxx\beMatrix\beCAD Library - INTERNAL\beCAD 2022\99 Templates\20_Config*
- Select the file "beCAD_Customize_Ribbon_KeyBoard_MarkingMenu"

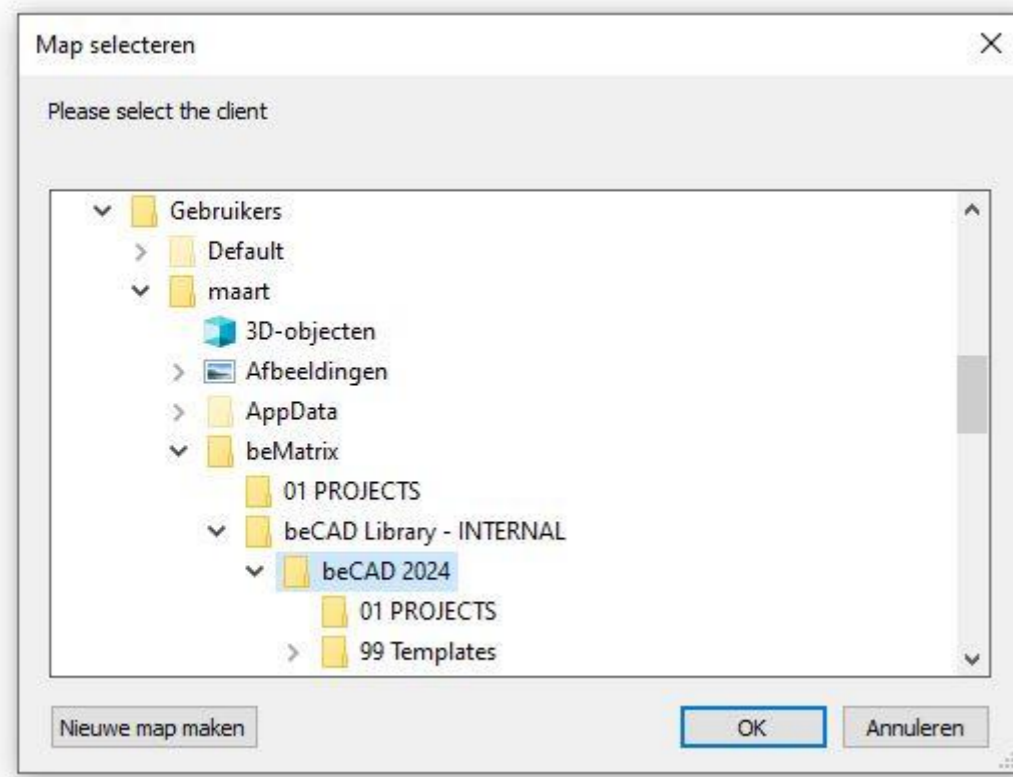




Set file location

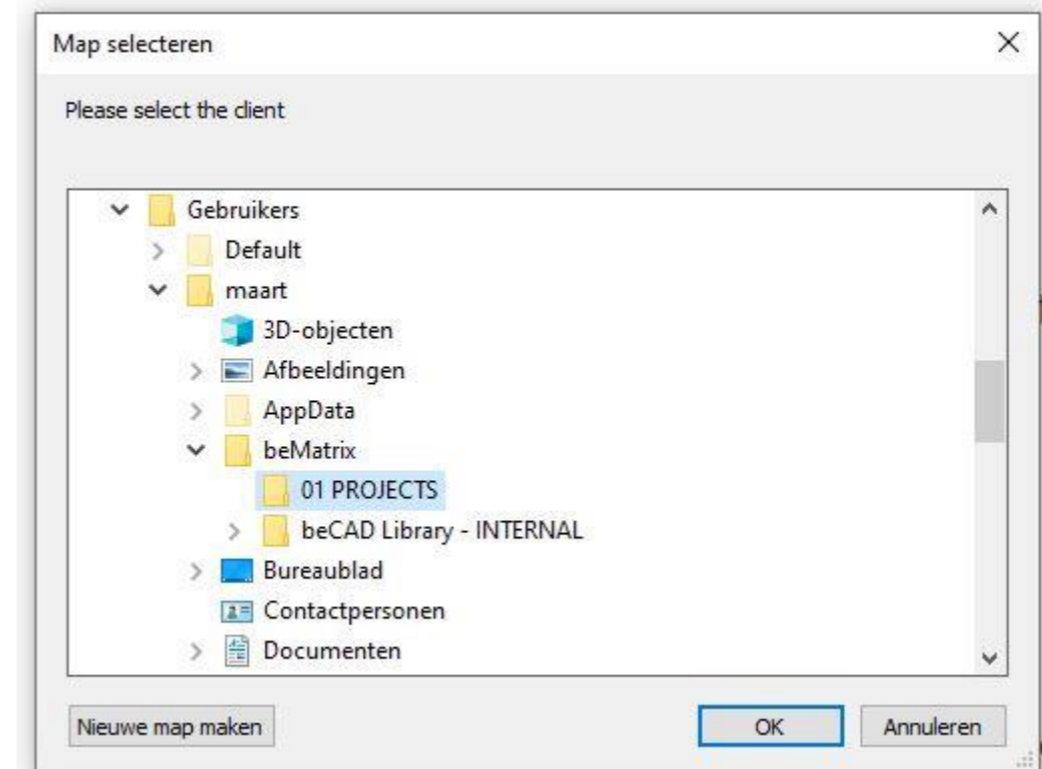


- 2 First select the beCAD 2024
C:/users/xxxx/beMatrix/beCAD Library - INTERNAL/beCAD 2024



- 3 And do the same for the Projects:
C:/users/xxxx/beMatrix/o1 PROJECTS

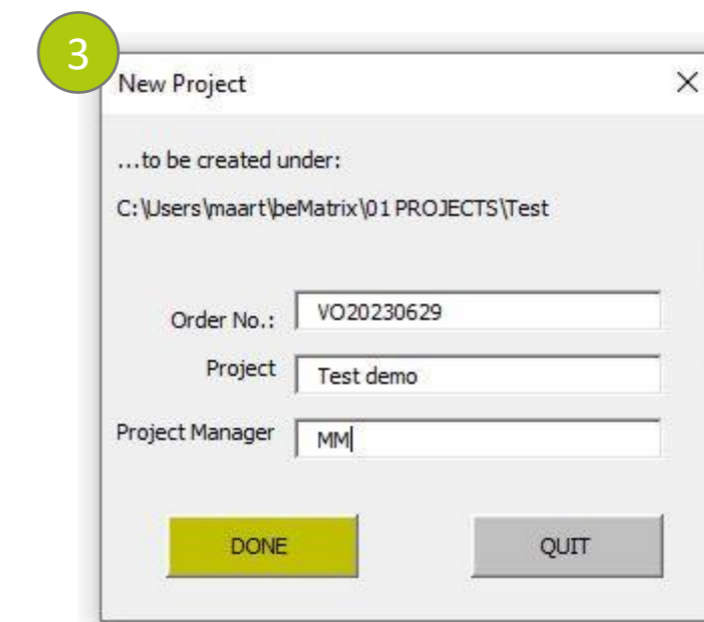
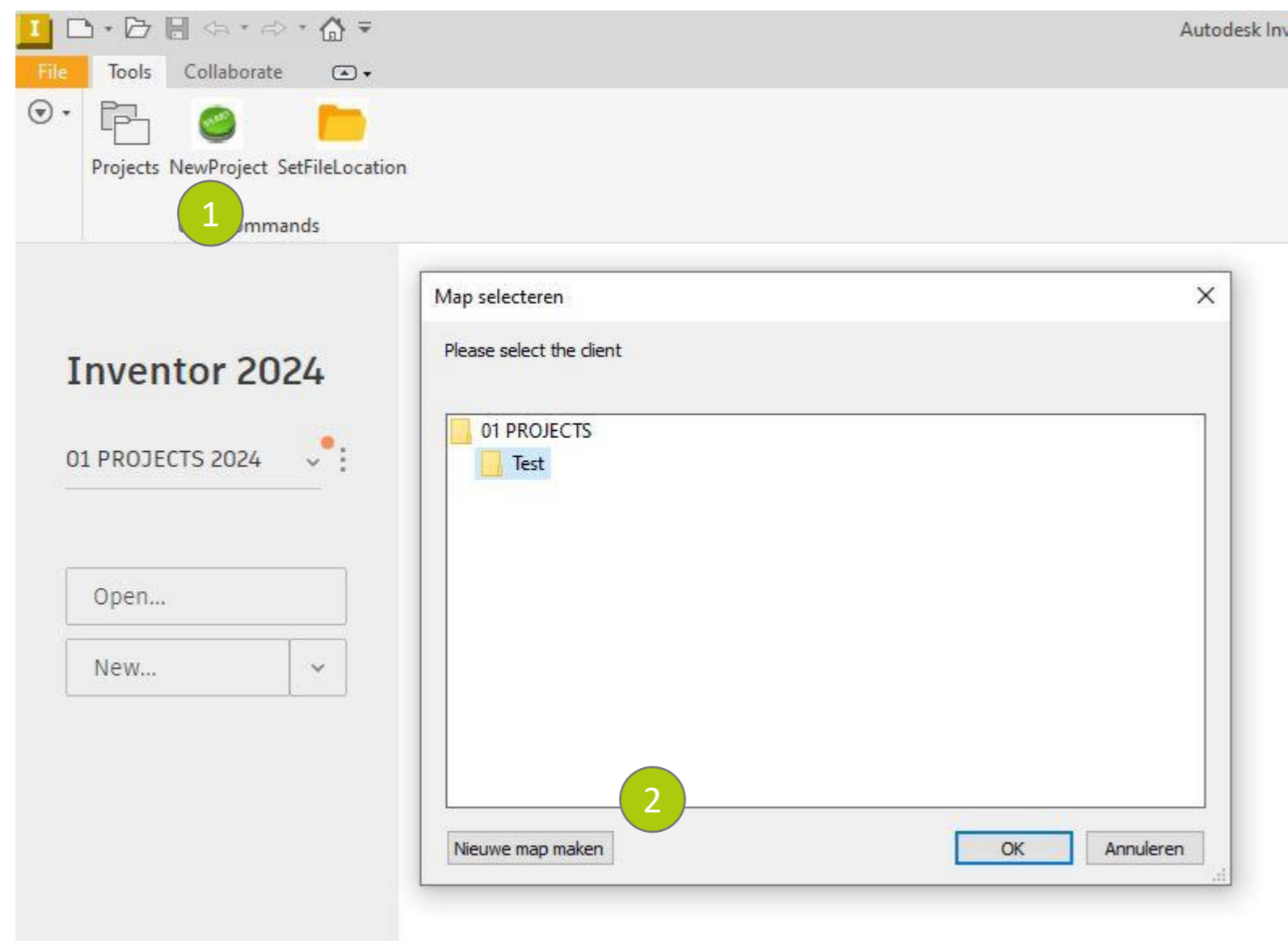
The projects must be the same location as your workspace (see slide 5)





New project

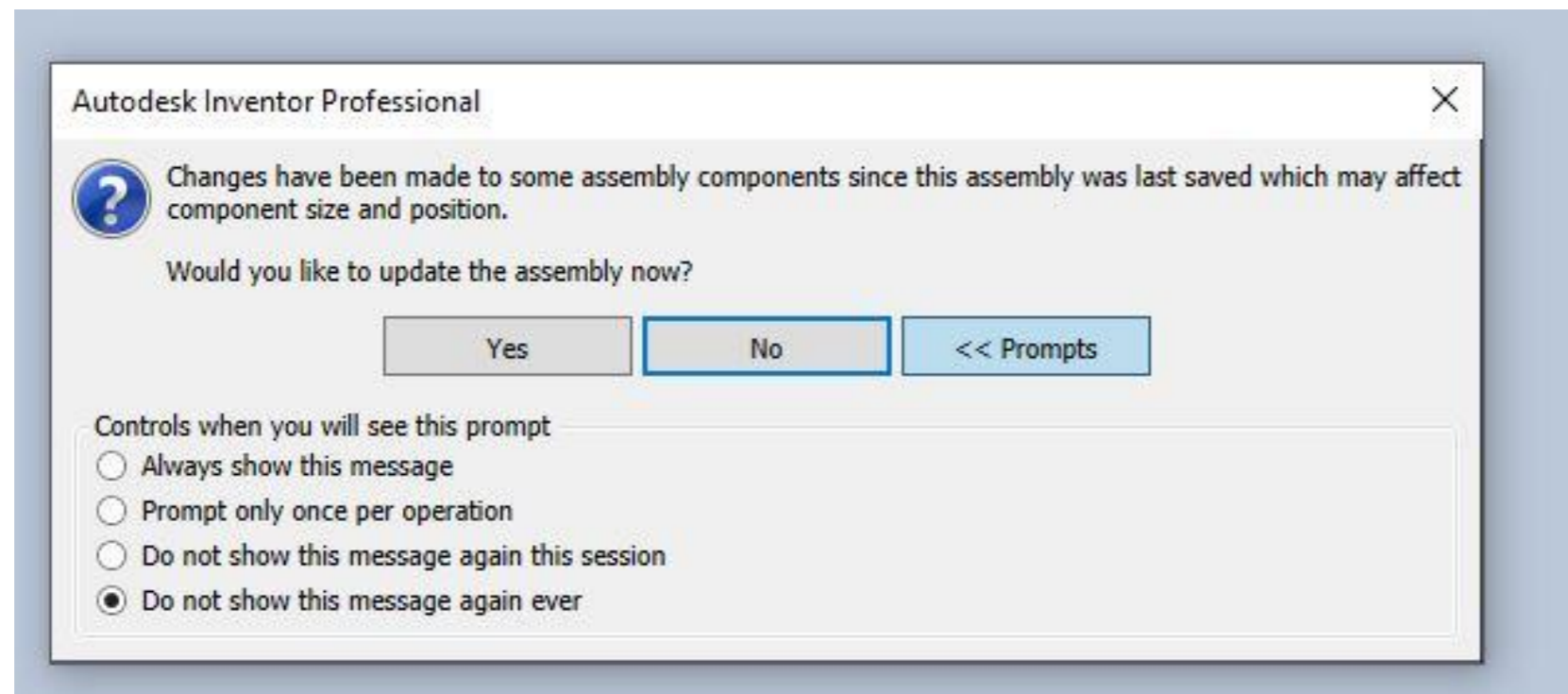
1. Try to start a NewProject
2. You can create a new folder for each customer
3. Fill in the prompts





Prompts

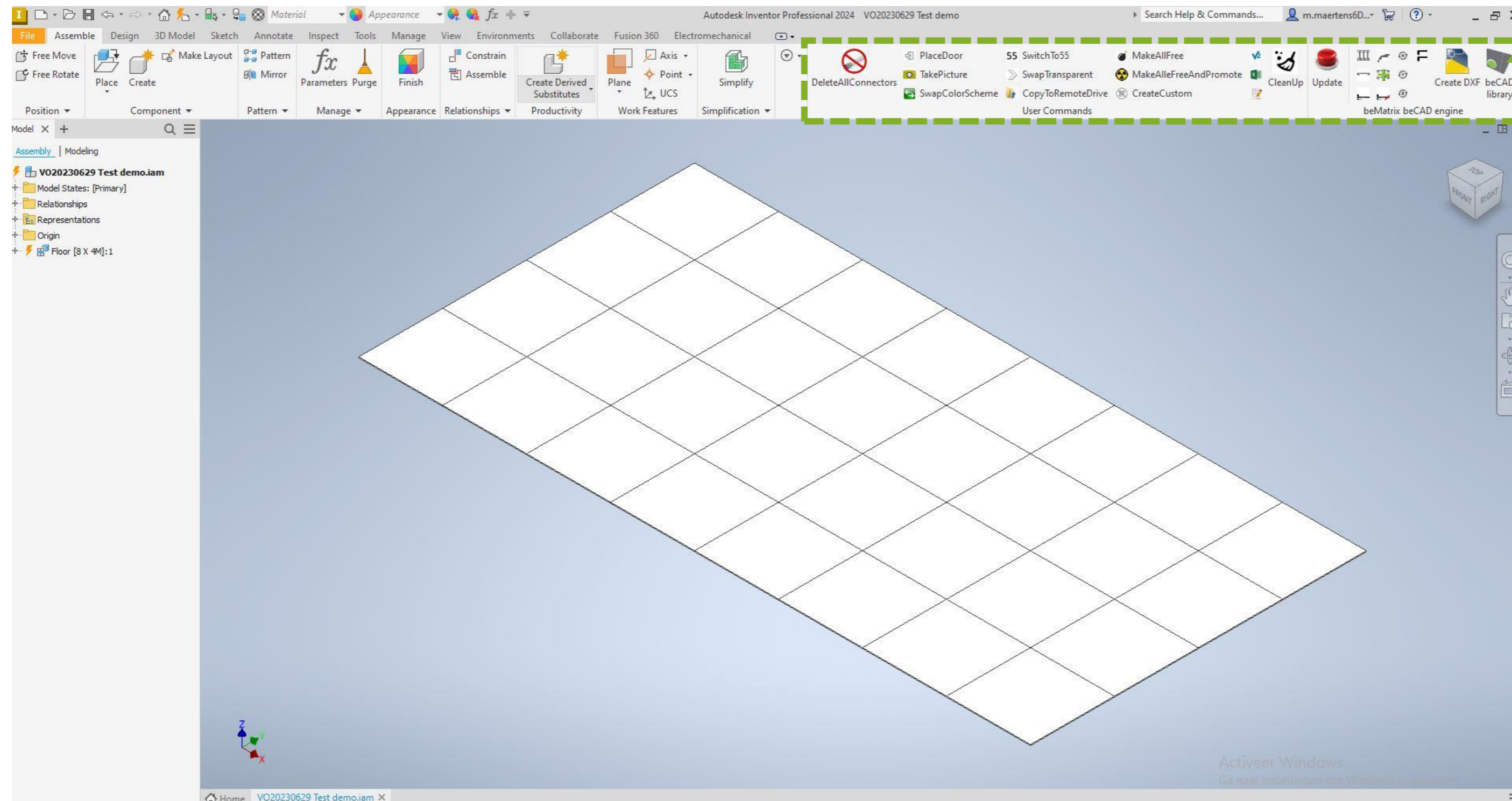
You can go to the prompts and never show this again. – click NO





RESTART INVENTOR

After restarting Inventor, open the latest project. You should see now this:



beCAD Library



beCAD library

