

**How to...**

**Determine  
panel dimensions  
for b62 frames**



**beMatrix**<sup>®</sup>

## How to...

### Determine panel dimensions for b62 frames

For **straight frames**, We recommend 3 mm thick panels such as aluminium sandwich panels, forex, ...

For **curved frames**, bear in mind that the chosen material must be suitable for bending in the desired radius. This is possible, for example, by choosing a thinner material.

For **perfect corners**, we advise to use 3 mm thick aluminium sandwich panels (dibond) with milled recess on the rear side for the fold.

### How to apply hook & loop tape on panels

[Click here](#) for a step by step manual of how to apply hook & loop tape on frame & panel.  
Please be advised to apply the loop tape on the panel +/- 8 mm from the edge.

Tip: hook & loop tape can be purchased at beMatrix, per roll of 25m or per box (45 rolls). Ask your internal sales contact for more information.

### bePartner • printed panels

We have selected worldwide partners for panel printing that can offer premium print quality and are very familiar with the beMatrix products. These so-called bePartner • printed panels will help you to achieve a perfect result.

Find your bePartner on our website: <https://bematrix.com/eu/en/support/find-bepartner>



# How to...

## Determine panel dimensions for b62 frames

The following pages explain how you can calculate the correct dimensions of the panel infills for your beMatrix frame or door. As a general rule, always start from the frame size.



b62 straight frames



b62 curved frames



b62 perfect corner



b62 perfect "U"

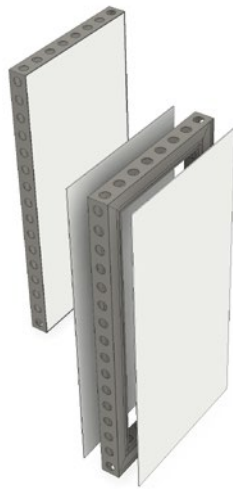


b62 pivot door

beMatrix®

## How to...

**Determine  
panel dimensions  
for b62 straight  
frames**



**Panel size = frame size – 7 mm**

Example

Frame: 992 x 2480 mm

Panel: 985 x 2473 mm

# How to...

## Determine panel dimensions for b62 curved frames



**OUT: 408,5 mm**



**IN: 317,5 mm**

### **688 0248 ++++**

b62 CURVED FRAME 90° [R0182] [H=++++MM]

#### Suggested infill size

#### **Outside panel**

Width: 408,5 mm

Height: height frame – 9 mm

#### **Inside panel**

Width: 317,5 mm

Height: height frame – 9 mm



**OUT: 798 mm**



**IN: 707 mm**

### **688 0496 ++++**

b62 CURVED FRAME 90° [R0430] [H=++++MM]

#### Suggested infill size

#### **Outside panel**

Width: 798 mm

Height: height frame – 9 mm (– 7 mm for frames as from April 2019)

#### **Inside panel**

Width: 707 mm

Height: height frame – 9 mm (– 7 mm for frames as from April 2019)



**OUT: 771 mm**



**IN: 725 mm**

### **688 0992 ++++ 45**

b62 CURVED FRAME 45° [R0992] [H=++++MM]

#### Suggested infill size

#### **Outside panel**

Width: 771 mm

Height: height frame – 7 mm

#### **Inside panel**

Width: 725 mm

Height: height frame – 7 mm

# How to...

## Determine panel dimensions for b62 curved frames



**OUT: 1549 mm**



**IN: 1458 mm**

### **688 0992 ++++ 90**

b62 CURVED FRAME 90° [R0992] [H=++++MM]

#### Suggested infill size

#### **Outside panel**

Width: 1549 mm

Height: height frame – 7 mm

#### **Inside panel**

Width: 1458 mm

Height: height frame – 7 mm



**OUT: 1161 mm**



**IN: 1116 mm**

### **688 1488 ++++**

b62 CURVED FRAME 45° [R1488] [H=++++MM]

#### Suggested infill size

#### **Outside panel**

Width: 1161 mm

Height: height frame – 7 mm

#### **Inside panel**

Width: 1116 mm

Height: height frame – 7 mm



**OUT: 1031,5 mm**



**IN: 1001 mm**

### **688 1984 ++++**

b62 CURVED FRAME 30° [R1984] [H=++++MM]

#### Suggested infill size

#### **Outside panel**

Width: 1031,5 mm

Height: height frame – 7 mm

#### **Inside panel**

Width: 1001 mm

Height: height frame – 7 mm

# How to...

## Determine panel dimensions for b62 curved frames



OUT: 1162 mm



IN: 1139 mm

### 688 2976 ++++

b62 CURVED FRAME 22,5° [R2976] [H=++++MM]

#### Suggested infill size

##### Outside panel

Width: 1162 mm

Height: height frame – 7 mm

##### Inside panel

Width: 1139 mm

Height: height frame – 7 mm



OUT: 1161 mm



IN: 1150 mm

### 688 5952 ++++

b62 CURVED FRAME 11,25° [R5952] [H=++++MM]

#### Suggested infill size

##### Outside panel

Width: 1161 mm

Height: height frame – 7 mm

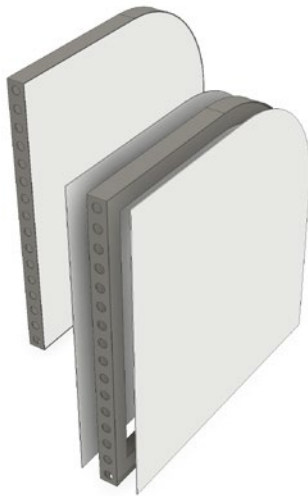
##### Inside panel

Width: 1150 mm

Height: height frame – 7 mm

## How to...

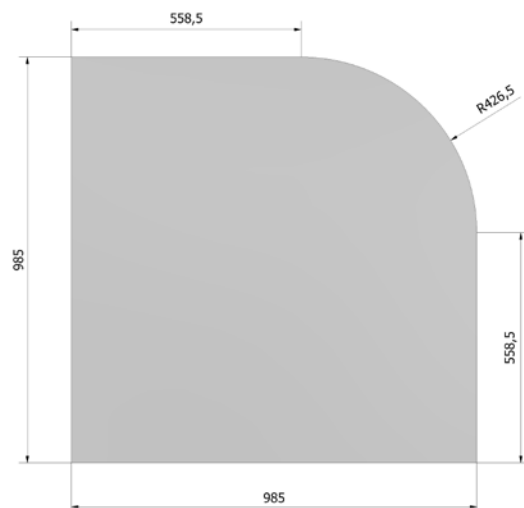
Determine  
panel dimensions  
for b62 frames  
with curved  
corner R430



**688 0992 0992 R430**

b62 FRAME [0992 X 0992MM] WITH CURVED CORNER R430

Suggested infill size: see drawing

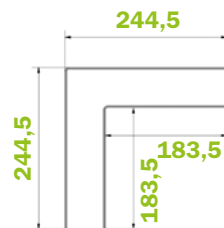


beMatrix®



# How to...

Determine  
panel dimensions  
for b62 perfect  
corners



## 690 0248 ++++

b62 PERFECT CORNER [0248 X 0248MM] [H=++++MM]

### Suggested infill size

#### Outside panel

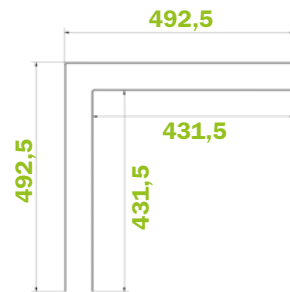
Width: 486,5 mm

Height: height frame – 7 mm

#### Inside panel

Width: 366 mm

Height: height frame – 7 mm



## 690 0496 ++++

b62 PERFECT CORNER [0496 X 0496MM] [H=++++MM]

### Suggested infill size

#### Outside panel

Width: 982,5 mm

Height: height frame – 7 mm

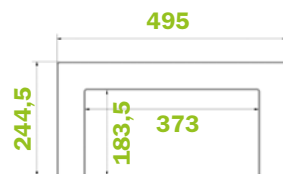
#### Inside panel

Width: 862 mm

Height: height frame – 7 mm

# How to...

Determine  
panel dimensions  
for b62 perfect  
"U"



## 691 0248 ++++

b62 PERFECT U [0248 X 0496 X 0248MM] [H=++++MM]

### Suggested infill size

#### Outside panel

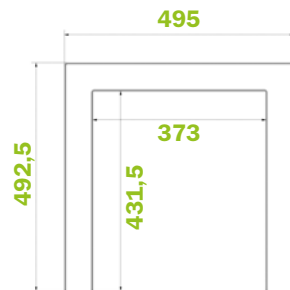
Width: 979 mm

Height: height frame – 7 mm

#### Inside panel

Width: 737,5 mm

Height: height frame – 7 mm



## 691 0496 ++++

b62 PERFECT U [0496 X 0496 X 0496MM] [H=++++MM]

### Suggested infill size

#### Outside panel

Width: 1475 mm

Height: height frame – 7 mm

#### Inside panel

Width: 1233,5 mm

Height: height frame – 7 mm

# How to...

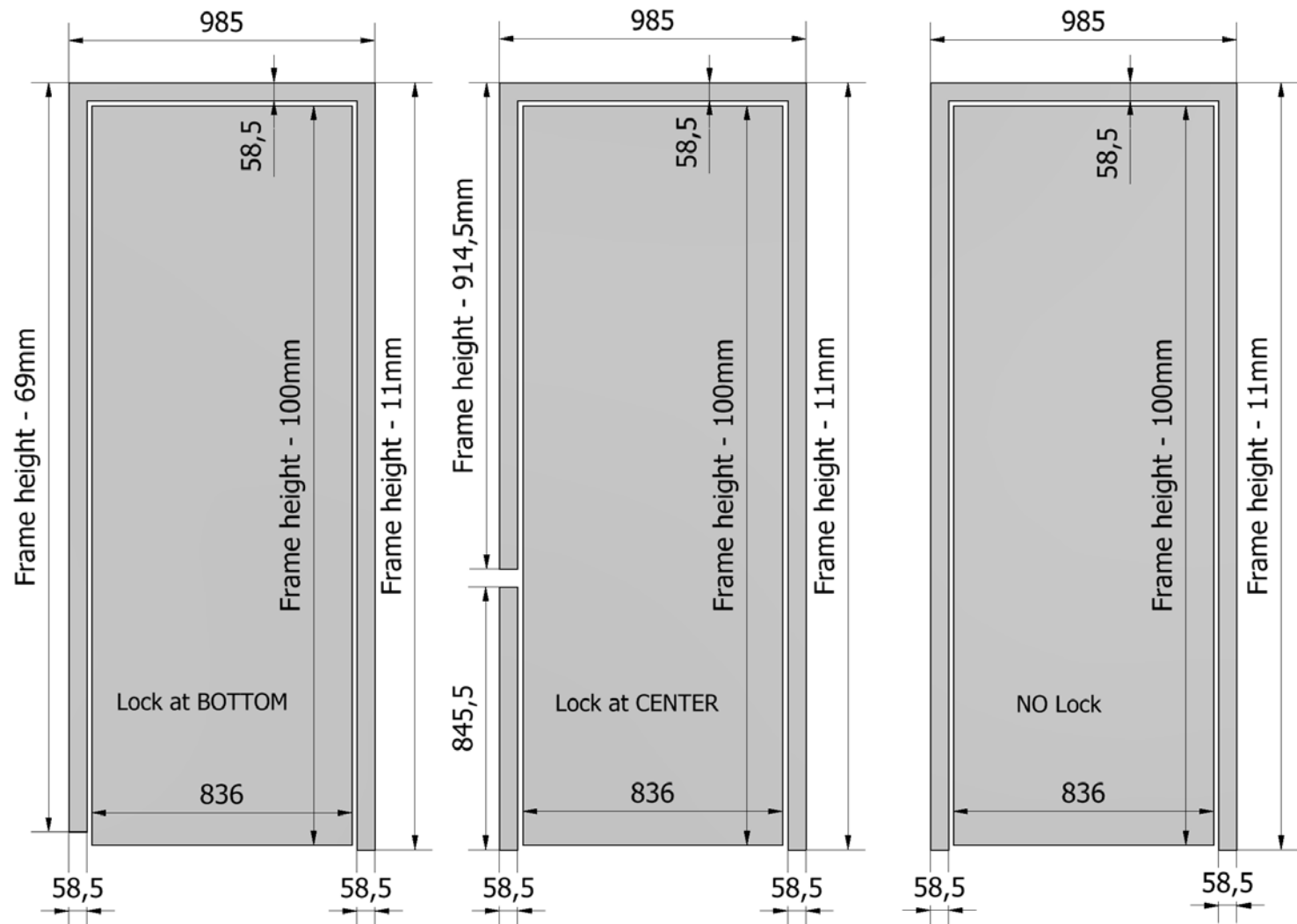
Determine panel dimensions for b62 pivot door



620 0992 +++++

b62 PIVOT DOOR MKII [0992 X +++++MM]

For panel infills for the pivot door, please take the dimensions below into account. The .DXF file of the panel dimensions can be found [here](#).



# How to...

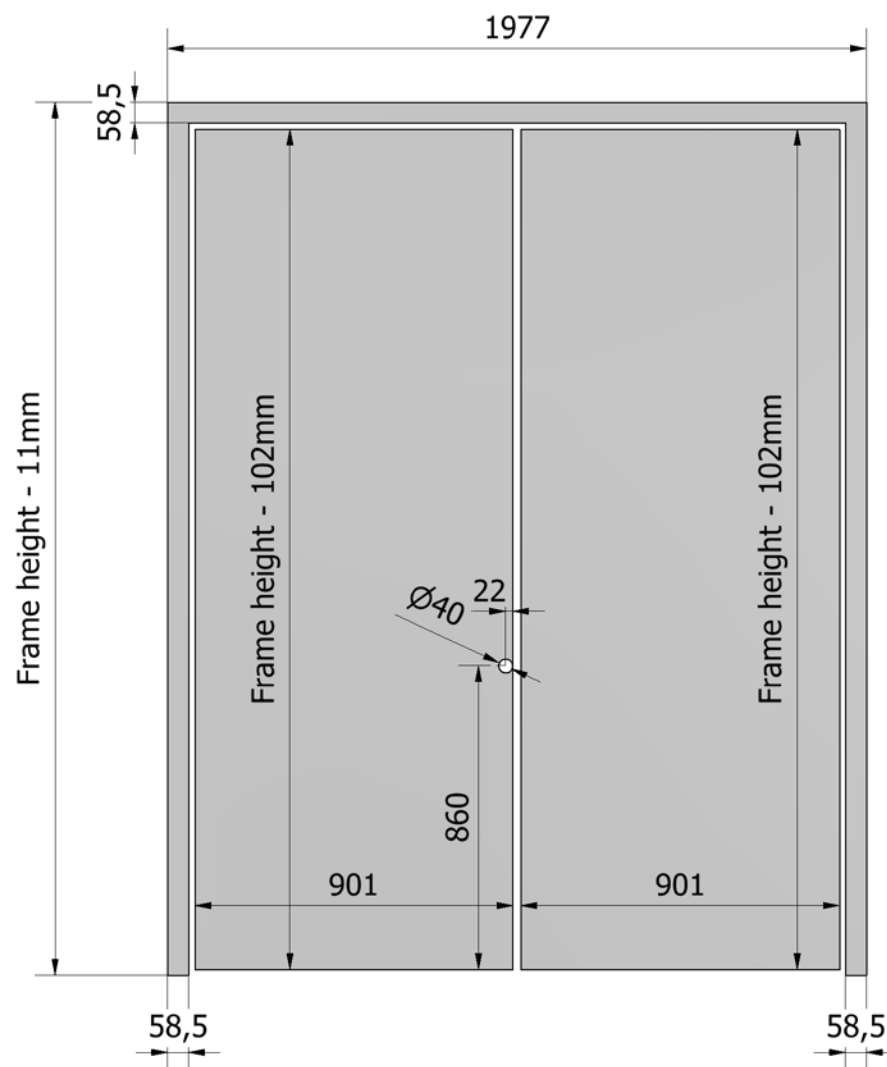
**Determine panel dimensions for b62 pivot double door**



**622 1984 +++++**

b62 PIVOT DOUBLE DOOR MKII [1984 X +++++MM]

For panel infills for the pivot door, please take the dimensions below into account. The .DXF file of the panel dimensions can be found [here](#).



beMatrix®

**beMatrix head-office Belgium**

*Wijnendalestraat 174*

*B - 8800 Roeselare*

*T. +32 51 20 07 50*

*F. +32 51 24 18 61*

*[www.beMatrix.com](http://www.beMatrix.com)*