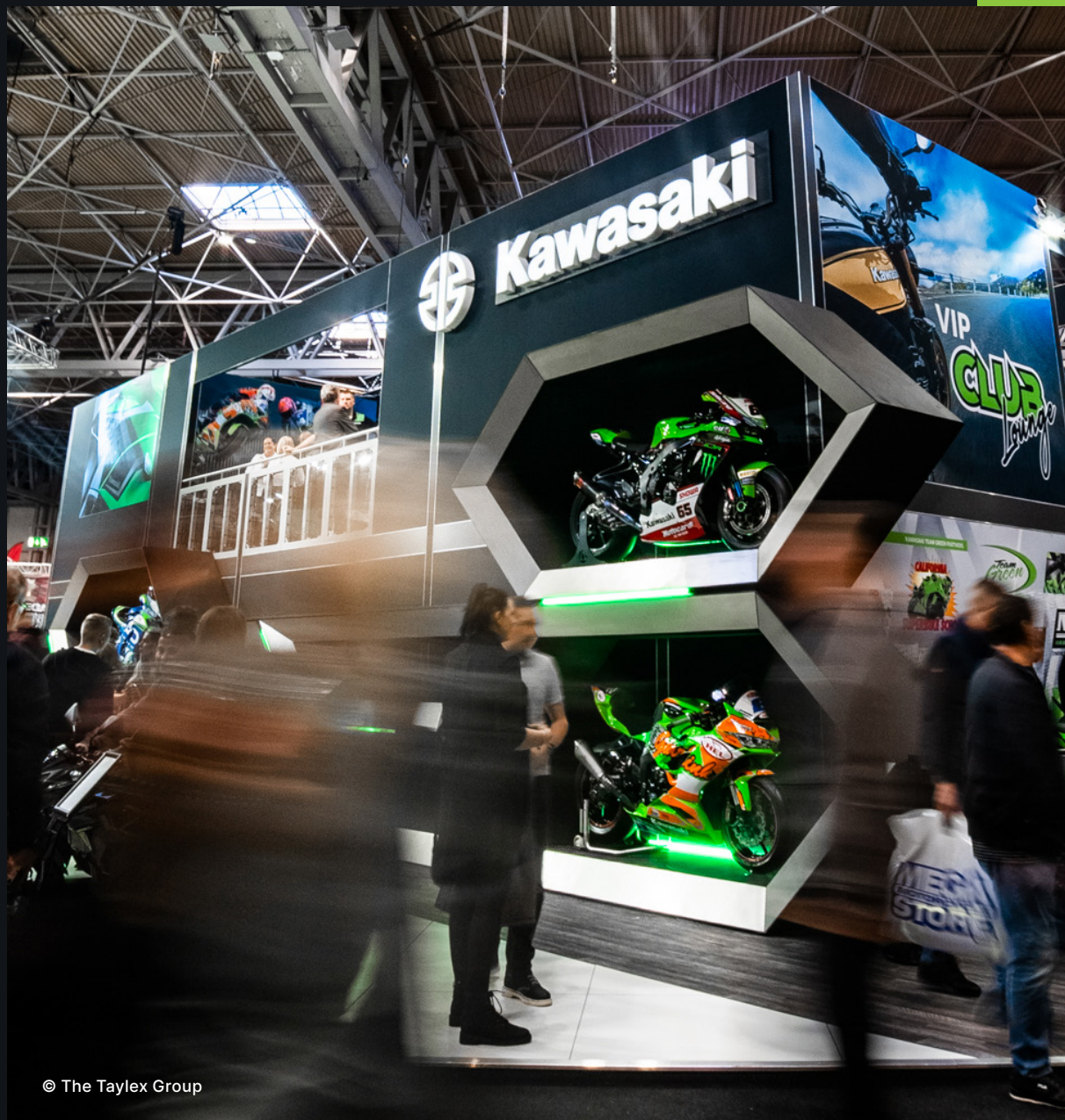


XTREME SOLUTIONS

DOUBLE DECK

be anything.

EN



© The Taylex Group

A modular floor

Double Deck, beMatrix DNA

Structure

The body

The skin

The stairs

The add-ons

Finish

Double Deck set

Configurations

Inspiration

The 8 beMatrix principles

bePartners at your service

4

4

6

6

8

10

14

16

18

19

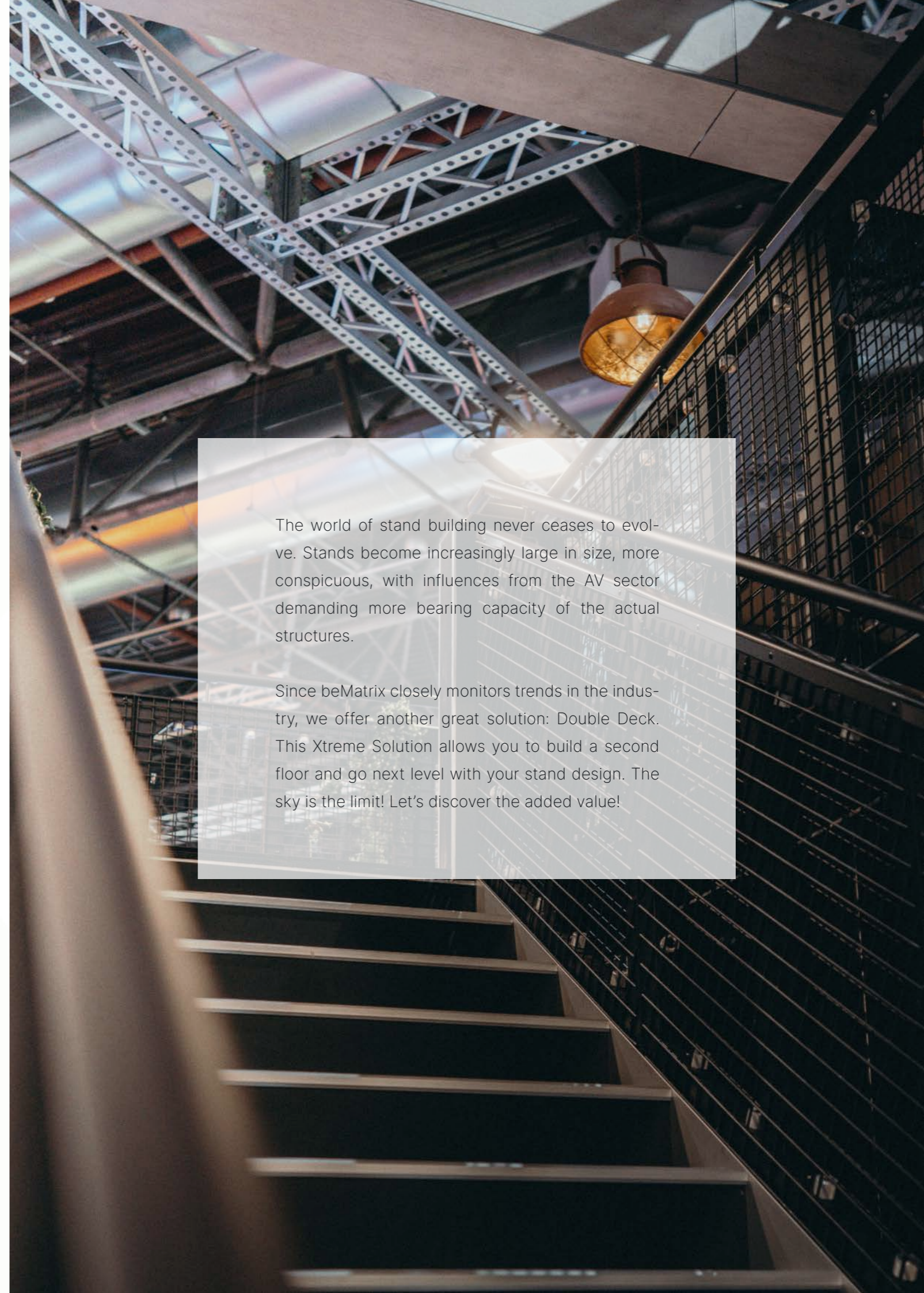
20

22

24

The world of stand building never ceases to evolve. Stands become increasingly large in size, more conspicuous, with influences from the AV sector demanding more bearing capacity of the actual structures.

Since beMatrix closely monitors trends in the industry, we offer another great solution: Double Deck. This Xtreme Solution allows you to build a second floor and go next level with your stand design. The sky is the limit! Let's discover the added value!



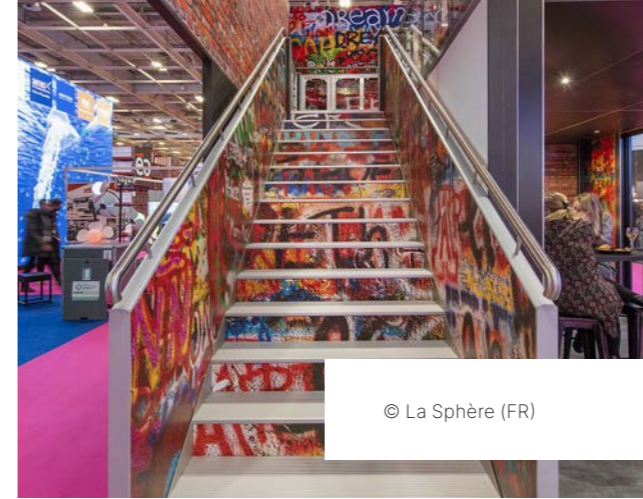
A modular floor

Double Deck, beMatrix DNA

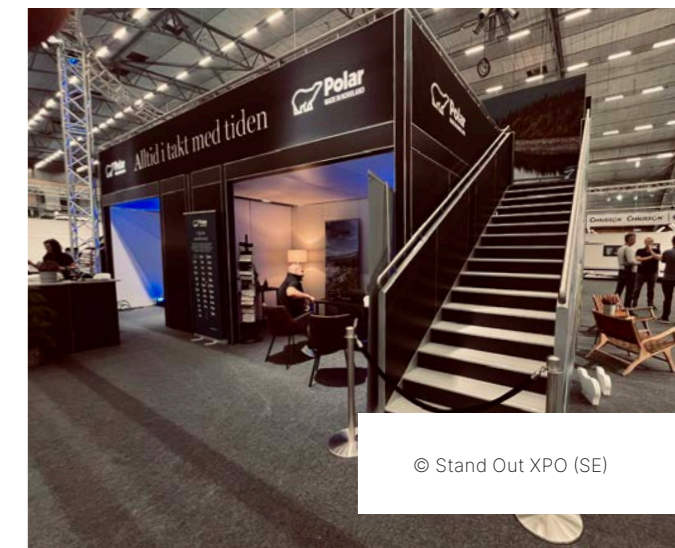
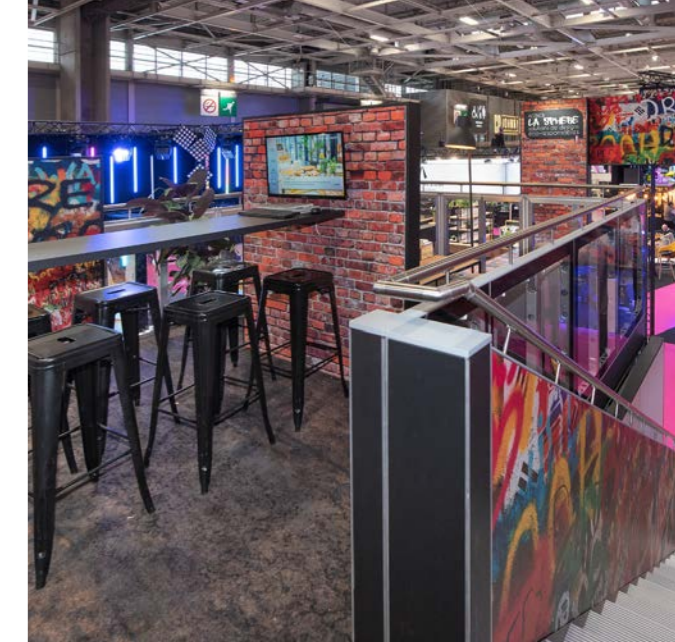
A second floor really allows you to get everything out of your stand's surface. beMatrix' double deck system doesn't only **increase the number of square footage**, but is also wholly **compatible with existing product ranges** (frames, LEDskin®, lightboxes, etc.), easy to integrate and to finish with the beMatrix frame system. That way, the structure and look and feel of your stand totally come together! beMatrix provides all the support you need to set up your stand.

The Double Deck structure can be finished with both **panels and textile**, allowing the entire stand to get the same finish.

Stability, safety as well as perfect aesthetic integration are equally important. We will make sure your stand's look is impeccable and compliant with all rules and regulations.



© La Sphère (FR)

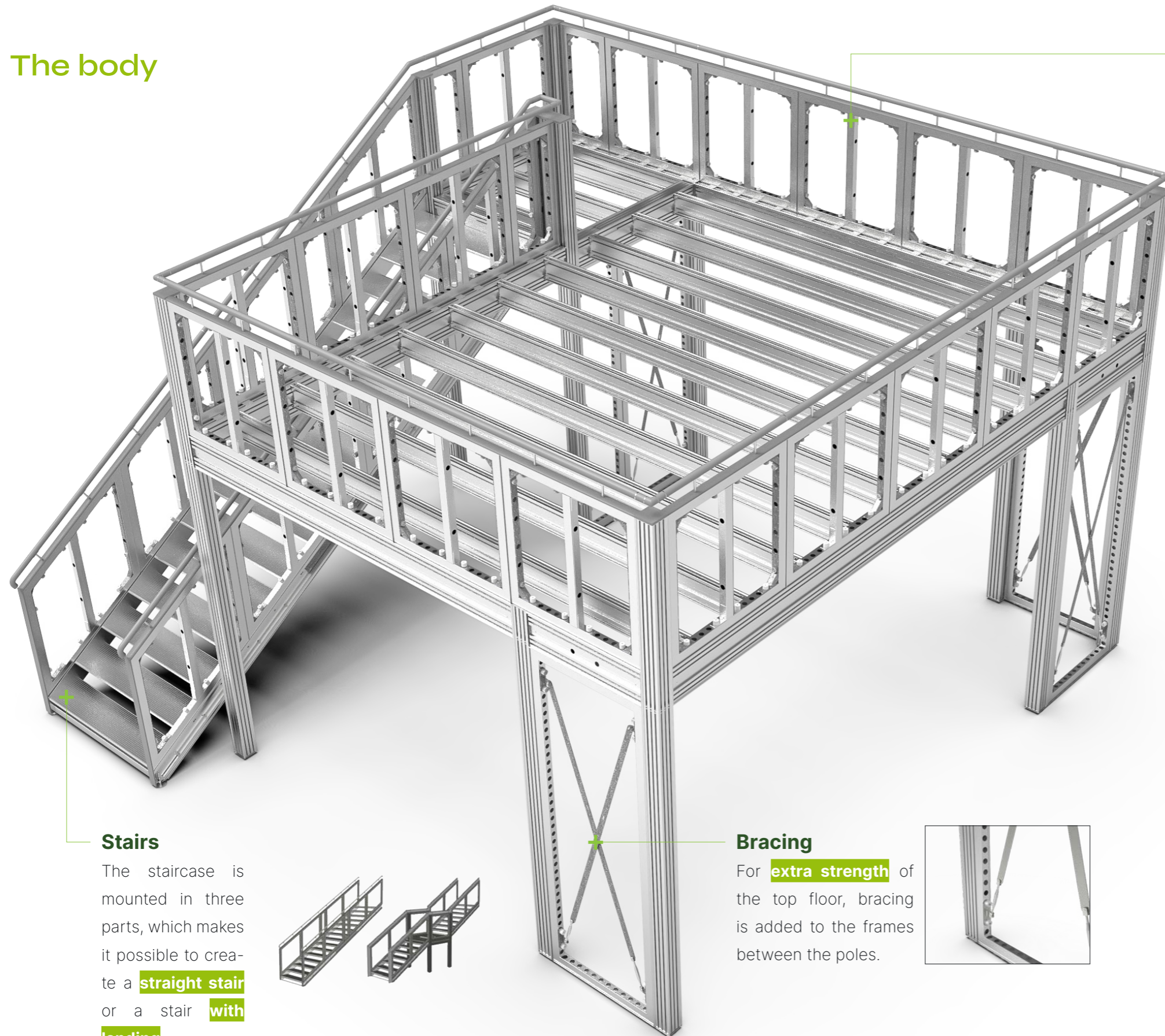


© Stand Out XPO (SE)



Structure

The body



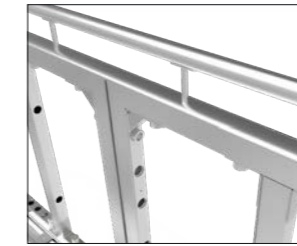
Stairs

The staircase is mounted in three parts, which makes it possible to create a **straight stair** or a stair **with landing**.



Bracing

For **extra strength** of the top floor, bracing is added to the frames between the poles.



Railing

Standard b62 frames are used as railing. Reinforcement brackets are mounted in every corner of the frames for support. A **rounded cover** and **stainless steel** handrail are added on top of the frames.

Optional:

We offer a **glass railing solution** (excl. the glass itself) to spice up your Double Deck. This railing consists of a U-profile that you attach with connectors. The glass can be put onto the U-profile.



Structure

A Double Deck is created with **primary & secondary beams and poles**. They can easily be connected as it is based on a coupling system avoiding the time consuming fastening of bolts and nuts.

PRIMARY BEAM

SECONDARY BEAM

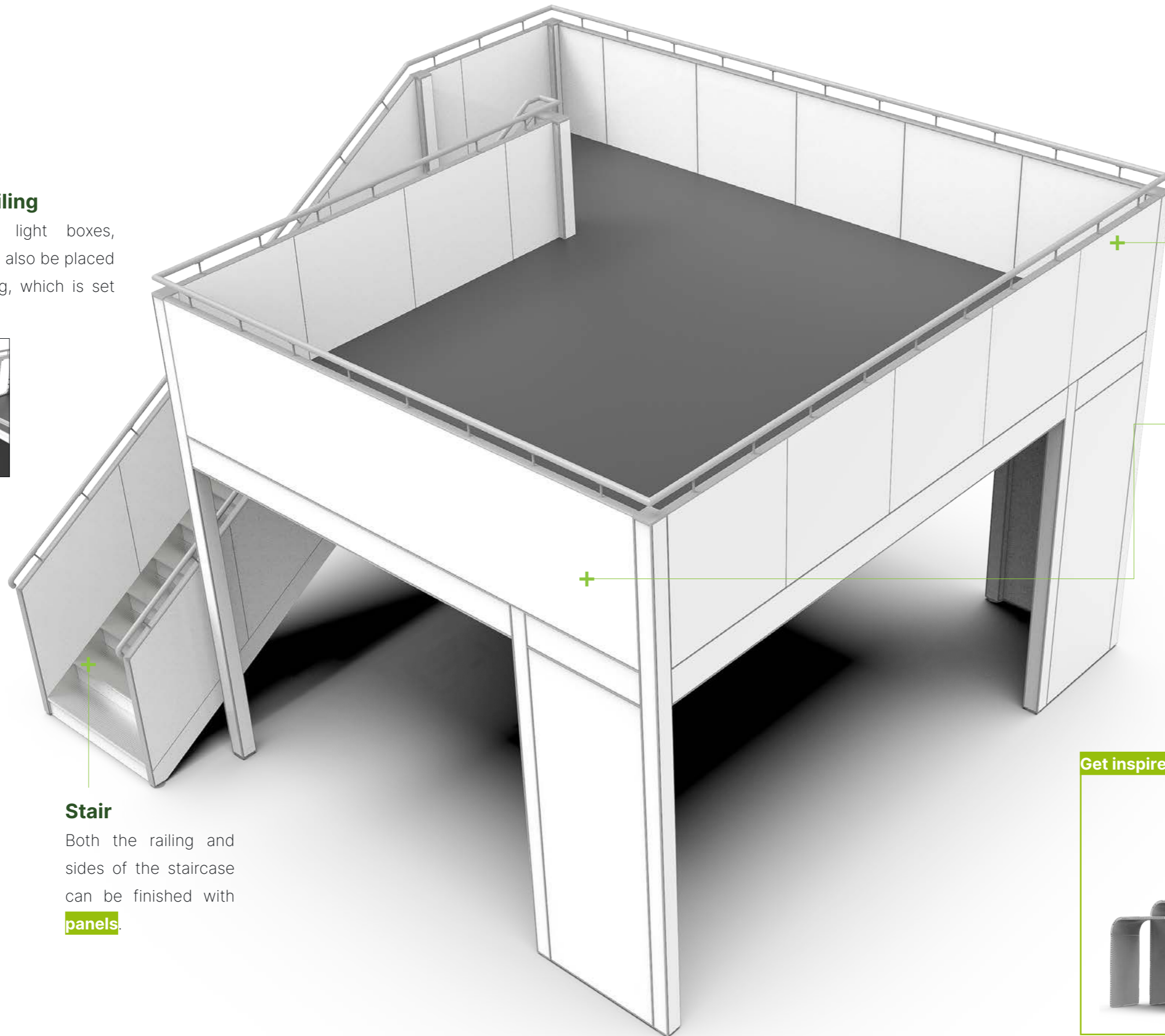
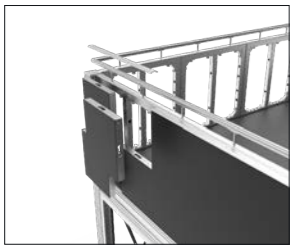
POLE



The skin

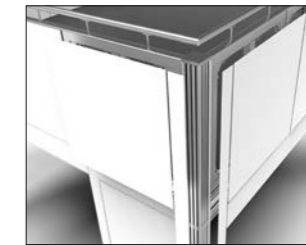
Finishing the railing

LEDskin® cabinets, light boxes, higher frames, ... can also be placed in front of the railing, which is set back slightly for this.



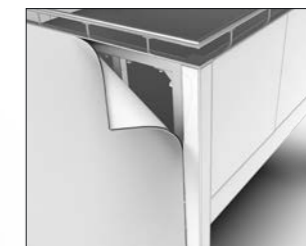
Panel

The Double Deck structure can be finished with 3mm thick panels.



Seamless textile

The frames of the Double Deck can be finished with a textile for a seamless result.



Stair

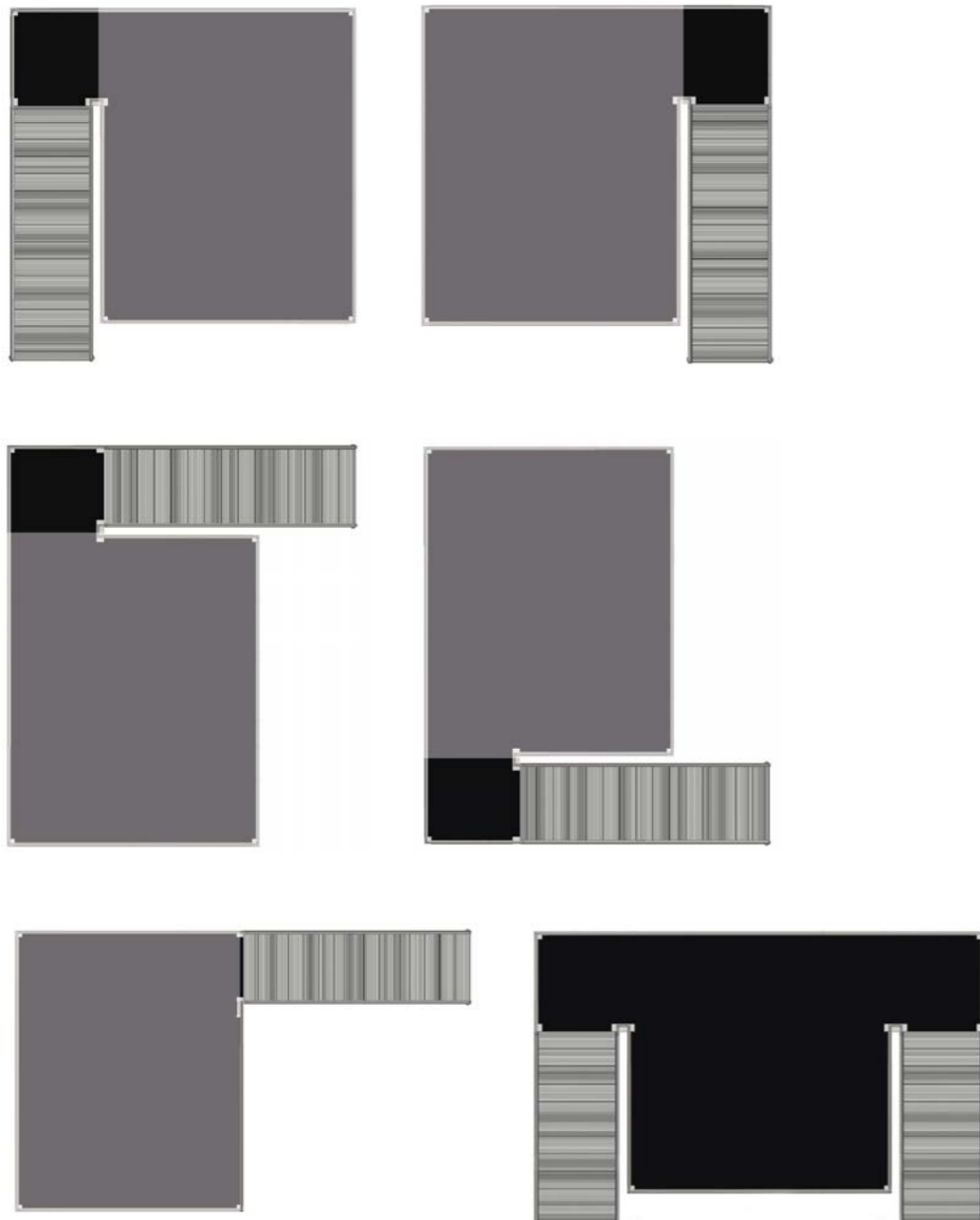
Both the railing and sides of the staircase can be finished with panels.

Get inspired!



The stairs

The stairs can be placed on every corner of your floor. Below you will find a visual representation of the various options.



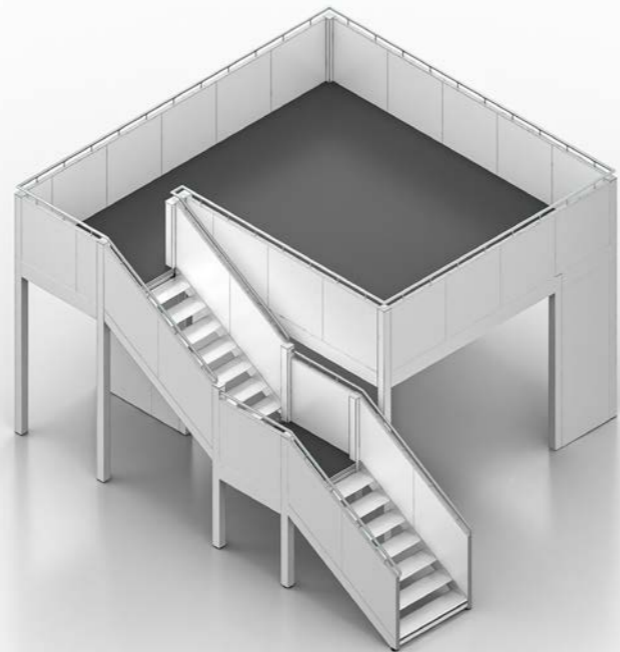
Landing platform



Cover bottom of the stairs

This can be purchased as a set of custom-made b62 frames and parts to close the bottom of the stairs of the Double Deck.





The add-ons

Optional to the Double Deck, we offer two possibilities to transport the profiles with ease:

Steel trolley

This complete steel trolley can be used to stack the beams and poles. The staircase cannot be put on the trolley. We recommend to transport this on a pallet.



Double Deck trolley

Art. nr

990 60 37

Profile separator & bottom support

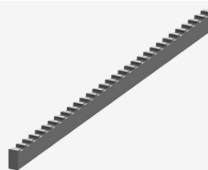
If you want to build your own case for transportation; you can do so with these products.



Profile separator

Art. nr

990 60 37 01



Bottom support

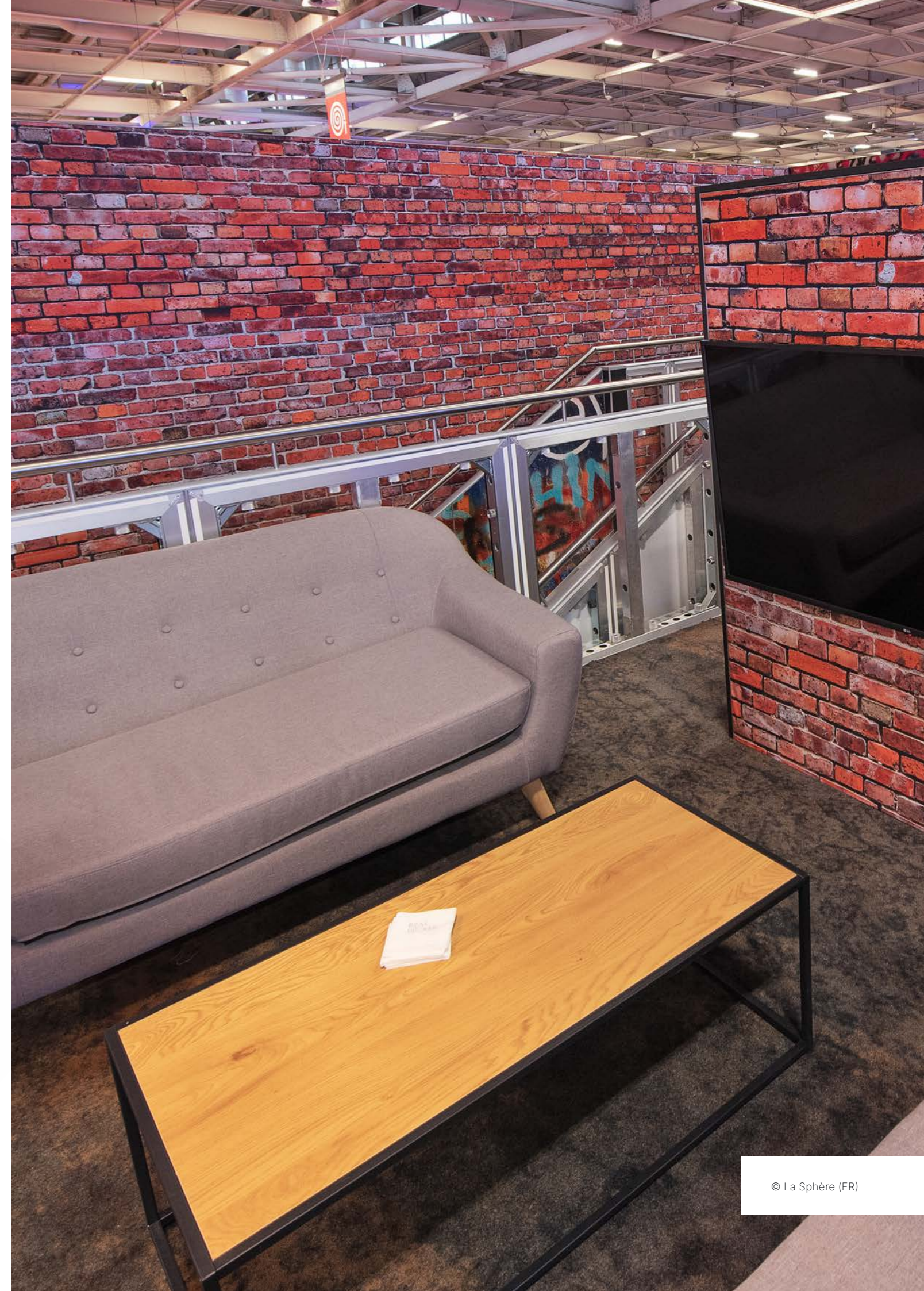
Art. nr

990 60 37 02



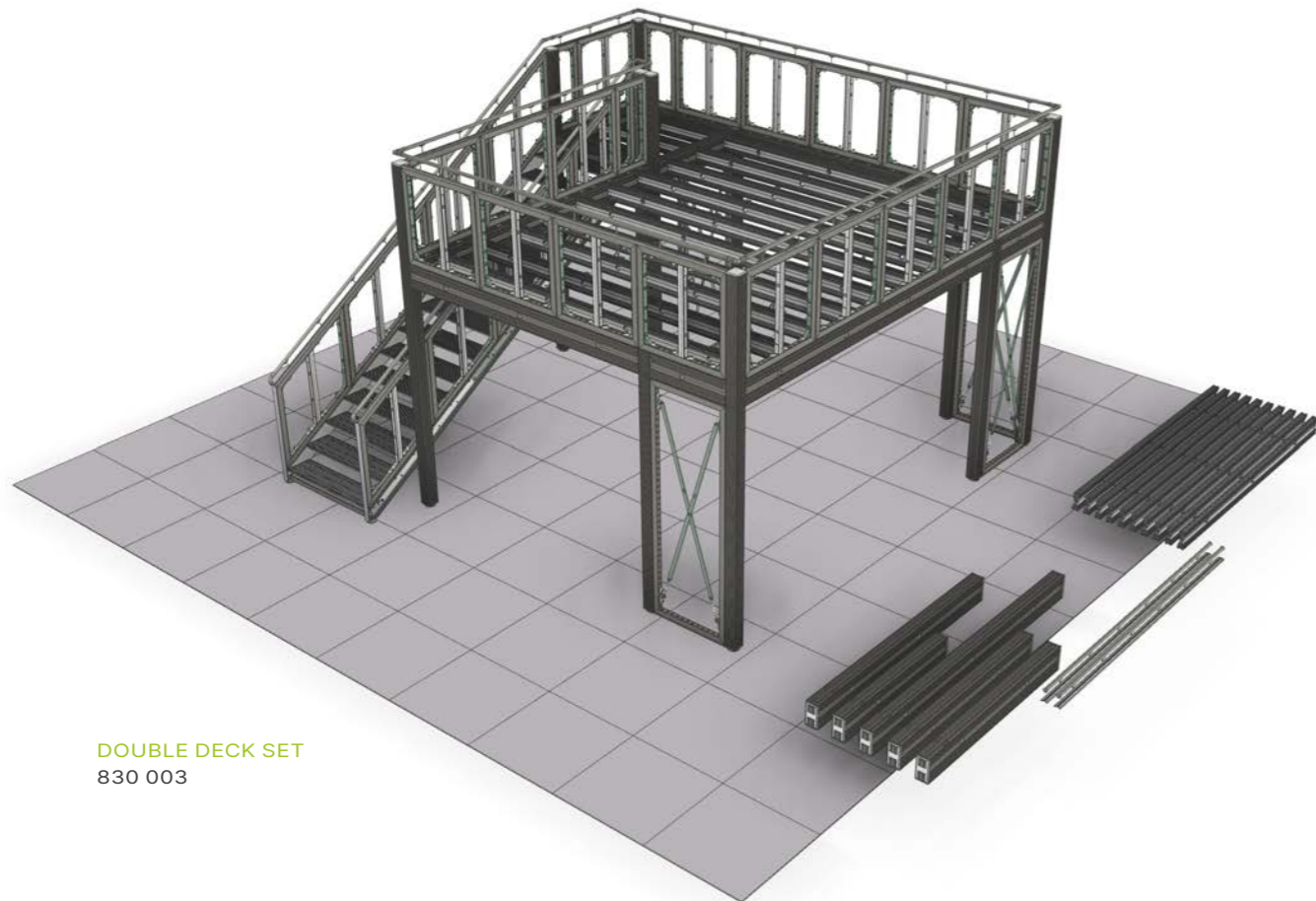
Finish

The finishing of floor and ceiling is not provided in the Double Deck modules. For the floor, **minimum 22 mm chipboard** must be provided. Standard b62 frames can be mounted underneath to make a ceiling. You can even close off the lower part with frames to have an extra meeting space.



Double Deck set

Profiles, poles, beams, floor brackets, staircases and railings: we offer you entire modules which you can easily add to your stand design. With the **Double Deck set 830 003** you can create up to six different configurations. **Other configurations on request, please contact us for more information.**

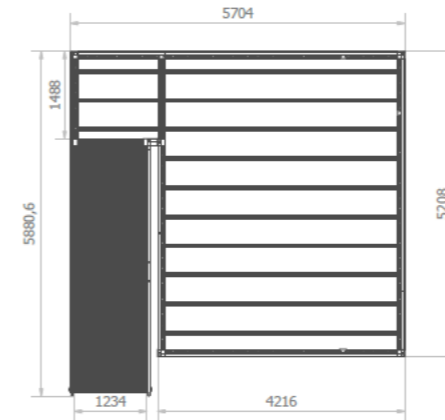


DOUBLE DECK SET
830 003

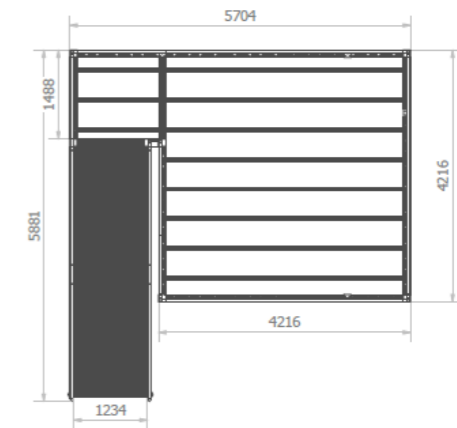
To transport the profiles of the set 830 003, you need two trolleys 990 60 37.

Configurations

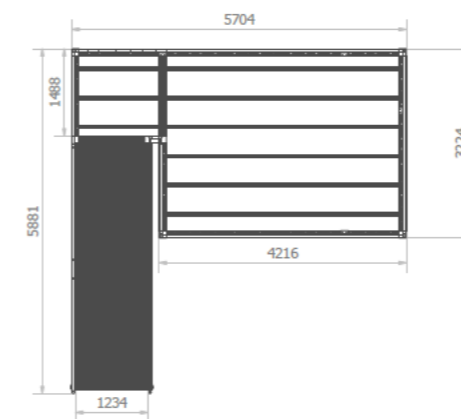
Configuration 1



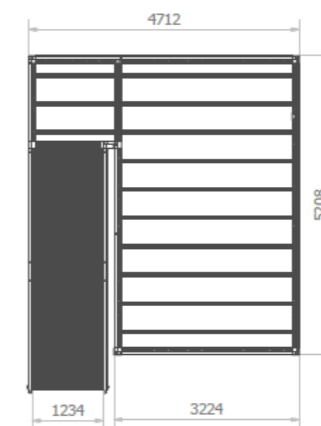
Configuration 2



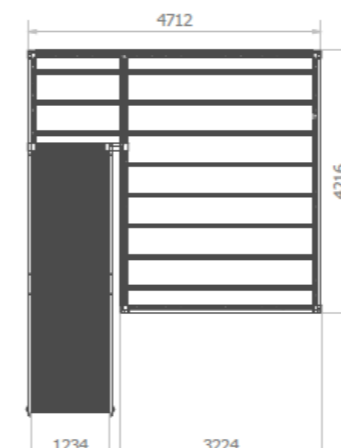
Configuration 3



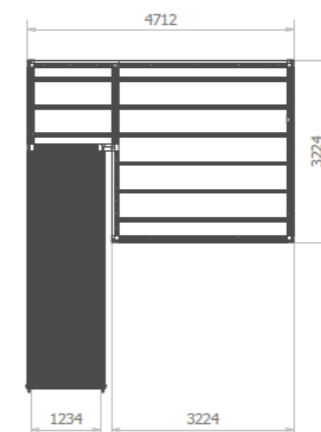
Configuration 4



Configuration 5

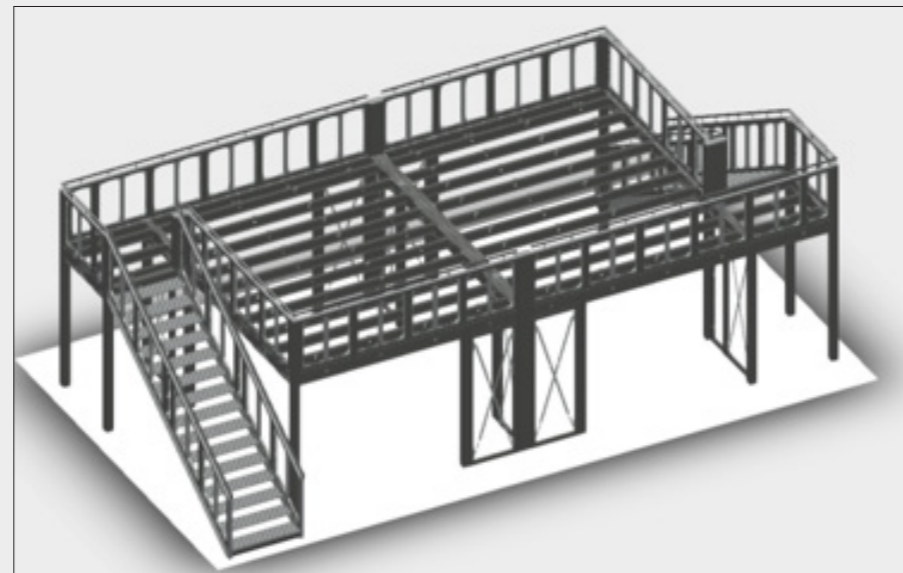
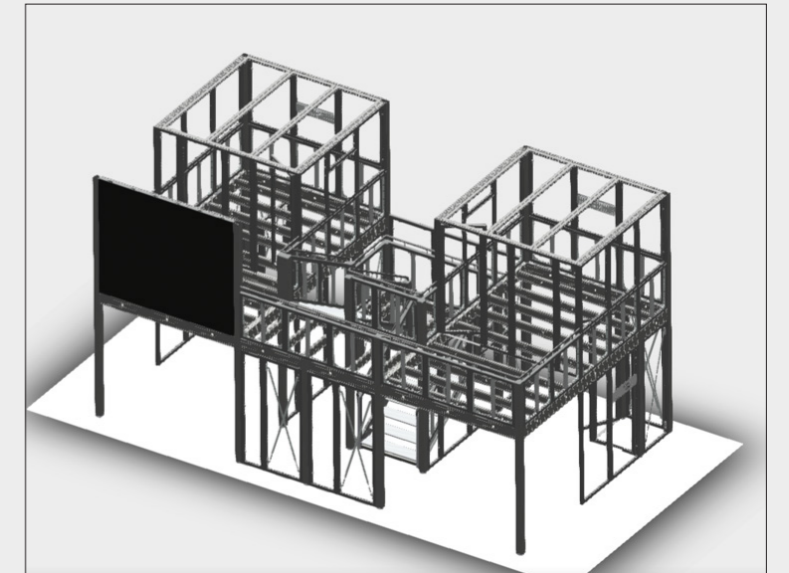
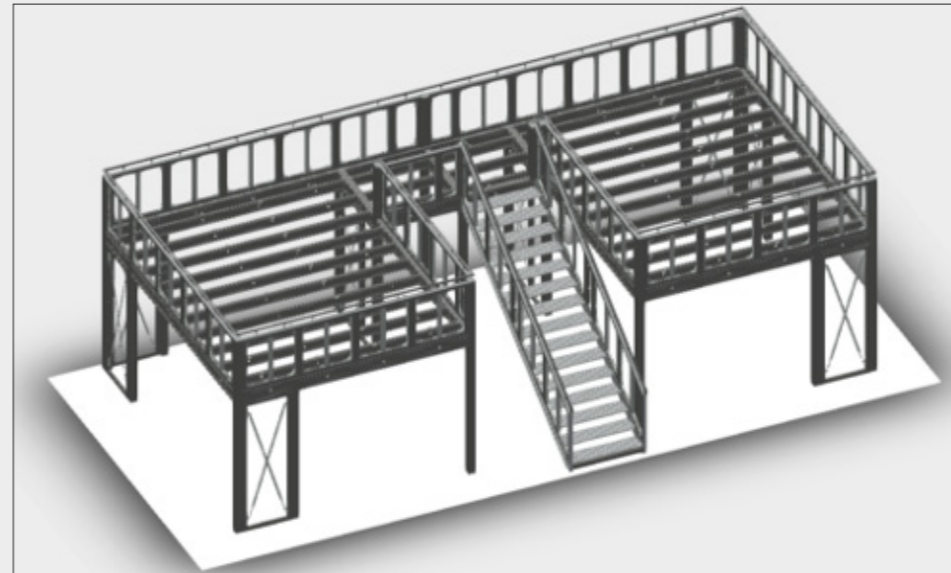


Configuration 6



Inspiration

Combine our sets for an outstanding result!



The 8 beMatrix principles



Quality guaranteed

All beMatrix frames are manufactured in-house, so we are in control of every step in the production process. Continuous optimisation and innovation initiatives ensure the system always complies with the market's demands.



Top finishing

The beMatrix stand building system comes with a large range of tools and accessories to finish your stand exactly the way you envisage it. With the infills, you can even hide the entire frame system so it becomes invisible to the eye. Thanks to our 'seamless' concept, not one seam will be noticeable.

Freedom to design

A beMatrix stand combines the benefits of a modular system with the possibilities of made-to-measure solutions. Almost any shape, contour and construction is conceivable and can easily be created. One single frame allows you to create all different kinds of stand concepts.



Lightweight

The aluminium frame system is lightweight, hence very ergonomic and eco-friendly: no need for the stand builder to carry around heavy structures, while the transport weight and CO2 emissions remain low.



Fast

Assembly and disassembly of the beMatrix system takes hardly any time. Its weight, simplicity and tool free assembly save loads of time, leaving you space to focus on the finishing details of your stand. Isn't that what makes you stand out most at a fair?

Long life cycle

The system is extremely sturdy, making it endlessly reusable. Wear and tear won't shorten its life cycle, since the frame is not visible to the eye once the entire stand is set up.

Ecologically sound

Because of its low weight, long life cycle and modular character, the beMatrix frame system is the eco-friendliest system today. Moreover, it is made out of untreated aluminium, so 100% recyclable and reusable without any quality losses.

International network

The bePartner network brings together real ambassadors of the beMatrix frame system, each with their own expertise: stand building, textile printing, LEDskin®, Double Deck... A creative cross-pollination offering you as our client nothing but benefits.



bePartners at your service

bePartner LEDskin®

Our LEDskin® bePartners all stock a minimum amount of LEDskin® and have years of expertise in the audiovisual industry. They are more than happy to help you perfectly integrate LEDskin® in your beMatrix stand.

bePartner printed textiles

Printing customised textiles takes real precision. Our bePartners for printed textiles have proven they totally master this specialised skill and guarantee perfect service, time and again.

bePartner build

Our bePartners build have a large stock of frames and accessories, integrate our latest innovations, are able to think outside the box and consider optimal service to be of paramount importance.

bePartner LEDskin® content

Do you already have LEDskin® available, but are you still looking for a partner to help you with content? Our content partners will advise and assist you, from content creation up to and including optimal display quality on your LEDskin® system.

bePartner printed panels

Printing infill panels for our beMatrix frames might seem simple, but this specialised job really has to be executed in a very precise way. Our bePartners for printed panels have already proven they totally master this specialised skill and guarantee excellent service, time and again.



be strong  **be stylish**
be anything.

Come say hi

HQ Belgium
Wijnendalestraat 174
8800 Roeselare

get in touch

+32 (0)51 20 07 50
info@beMatrix.com

or boost your inspiration

www.beMatrix.com
socials @beMatrix
